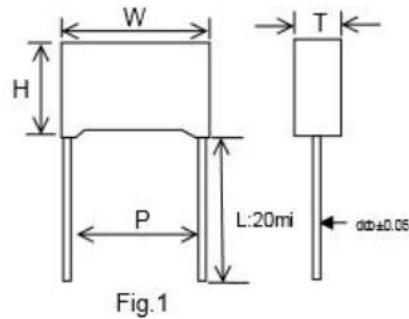


CBB81-B { MPB }

Metallized Polypropylene Film Capacitor-Box



CBB81-B are non-inductively wound with metallized polypropylene film as the dielectric/electrode with copper-clad steel leads and encapsulated in a plastic case sealed with epoxy resin

SPECIFICATIONS

Rated voltage: 1000V,1200V,1600V,2000V,3000V

Capacitance range:0.0010-1.0UF

Capacitance tolerance:±5%(J) ±10%(k)

Operating temperature:40/85/21

Voltage proof:4.3UR (5s)

Dissipation Factor:≤0.3%(20°C, 10kHz)

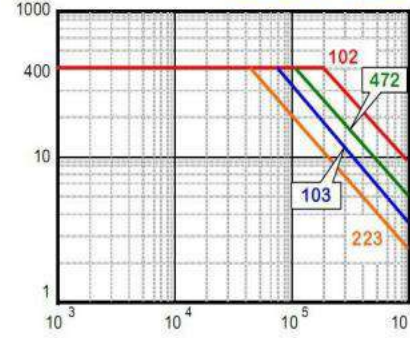
FEATURES

- 1.Very low loss at high frequency,suitable for high current
- 2.Excellent frequency and temperature characteristics
- 3.High insulation resistance,self-healing effect
- 4.Widely used in high frequency,DC,AC and pulse circuits

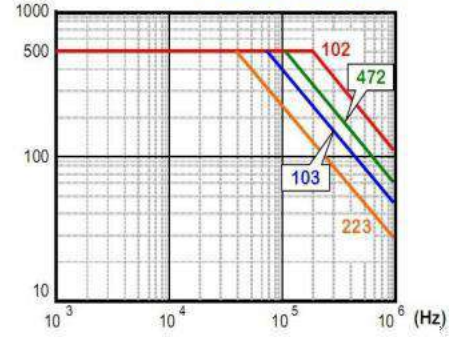
CBB81-B{ MPB}

Metallized Polypropylene Film Capacitor-Box

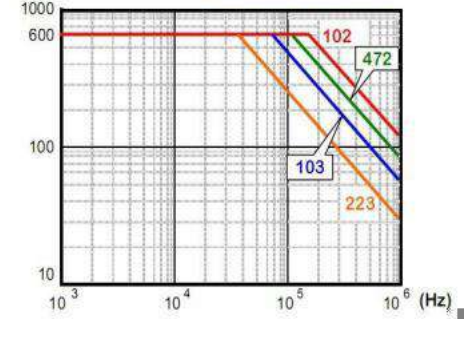
1000VDC / 400VAC



1600VDC / 500VAC



2000VDC / 600VAC



Part Number	Rated Cap.	1000VDC(1000Vo-p max)						Part Number	Rated Cap.	1600VDC(1400Vo-p max)						Part Number	Rated Cap.	2000VDC(1600Vo-p max)					
		W	H	T	P	d	W			H	T	P	d	W	H			T	P	d			
		max	max	max	±1.0	±0.05	max			max	max	±1.0	±0.05	max	max			max	±1.0	±0.05			
STCBB81-B102□3AL15	1000pF	18.0	12.0	7.0	15.0	0.8	STCBB81-B102□3CL15	1000pF	18.0	12.0	7.0	15.0	0.8	STCBB81-B102□3DL15	1000pF	18.0	12.5	7.5	15.0	0.8			
STCBB81-B122□3AL15	1200pF	18.0	12.5	7.0	15.0	0.8	STCBB81-B122□3CL15	1200pF	18.0	12.5	7.0	15.0	0.8	STCBB81-B122□3DL15	1200pF	18.0	13.0	8.0	15.0	0.8			
STCBB81-B152□3AL15	1500pF	18.0	13.0	7.5	15.0	0.8	STCBB81-B152□3CL15	1500pF	18.0	13.0	7.5	15.0	0.8	STCBB81-B152□3DL15	1500pF	18.0	13.5	8.5	15.0	0.8			
STCBB81-B182□3AL15	1800pF	18.0	13.5	8.0	15.0	0.8	STCBB81-B182□3CL15	1800pF	18.0	13.5	8.0	15.0	0.8	STCBB81-B182□3DL15	1800pF	18.0	14.0	9.5	15.0	0.8			
STCBB81-B222□3AL15	2200pF	18.0	14.0	9.0	15.0	0.8	STCBB81-B222□3CL15	2200pF	18.0	14.0	9.0	15.0	0.8	STCBB81-B222□3DL15	2200pF	18.0	15.0	10.0	15.0	0.8			
STCBB81-B272□3AL15	2700pF	18.0	14.5	9.5	15.0	0.8	STCBB81-B272□3CL15	2700pF	18.0	14.5	9.5	15.0	0.8	STCBB81-B272□3DL15	2700pF	18.0	16.0	10.5	15.0	0.8			
STCBB81-B332□3AL15	3300pF	18.0	15.0	10.0	15.0	0.8	STCBB81-B332□3CL15	3300pF	18.0	15.5	10.5	15.0	0.8	STCBB81-B332□3DL15	3300pF	18.0	16.5	11.5	15.0	0.8			
STCBB81-B362□3AL15	3600pF	18.0	15.5	10.0	15.0	0.8	STCBB81-B362□3CL20	3600pF	24.0	14.0	8.5	20.0	0.8	STCBB81-B362□3DL20	3600pF	24.0	15.0	9.0	20.0	0.8			
STCBB81-B392□3AL15	3900pF	18.0	16.0	10.0	15.0	0.8	STCBB81-B392□3CL20	3900pF	24.0	14.5	9.0	20.0	0.8	STCBB81-B392□3DL20	3900pF	24.0	15.5	9.5	20.0	0.8			
STCBB81-B432□3AL15	4300pF	18.0	16.0	10.5	15.0	0.8	STCBB81-B432□3CL20	4300pF	24.0	15.0	9.5	20.0	0.8	STCBB81-B432□3DL20	4300pF	24.0	16.5	9.5	20.0	0.8			
STCBB81-B472□3AL20	4700pF	24.0	14.0	8.0	20.0	0.8	STCBB81-B472□3CL20	4700pF	24.0	15.5	10.0	20.0	0.8	STCBB81-B472□3DL20	4700pF	24.0	17.0	10.0	20.0	0.8			
STCBB81-B512□3AL20	5100pF	24.0	14.5	8.5	20.0	0.8	STCBB81-B512□3CL20	5100pF	24.0	16.0	10.0	20.0	0.8	STCBB81-B512□3DL20	5100pF	24.0	17.5	10.5	20.0	0.8			
STCBB81-B562□3AL20	5600pF	24.0	15.5	9.0	20.0	0.8	STCBB81-B562□3CL20	5600pF	24.0	17.0	10.5	20.0	0.8	STCBB81-B562□3DL20	5600pF	24.0	18.0	11.0	20.0	0.8			
STCBB81-B602□3AL20	6000pF	24.0	16.0	9.5	20.0	0.8	STCBB81-B602□3CL20	6000pF	24.0	17.5	10.5	20.0	0.8	STCBB81-B602□3DL22	6000pF	26.0	17.0	10.5	22.5	0.8			
STCBB81-B622□3AL20	6200pF	24.0	16.5	10.0	20.0	0.8	STCBB81-B622□3CL20	6200pF	24.0	18.0	11.0	20.0	0.8	STCBB81-B622□3DL22	6200pF	26.0	17.5	11.0	22.5	0.8			
STCBB81-B682□3AL20	6800pF	24.0	17.0	10.5	20.0	0.8	STCBB81-B682□3CL22	6800pF	26.0	17.0	9.5	22.5	0.8	STCBB81-B682□3DL22	6800pF	26.0	18.0	11.5	22.5	0.8			
STCBB81-B752□3AL20	7500pF	24.0	17.5	10.5	20.0	0.8	STCBB81-B752□3CL22	7500pF	26.0	17.5	10.5	22.5	0.8	STCBB81-B752□3DL22	7500pF	26.0	18.5	12.0	22.5	0.8			
STCBB81-B822□3AL20	8200pF	24.0	18.0	10.5	20.0	0.8	STCBB81-B822□3CL22	8200pF	26.0	18.0	11.0	22.5	0.8	STCBB81-B822□3DL22	8200pF	26.0	18.5	12.5	22.5	0.8			
STCBB81-B912□3AL20	9100pF	24.0	18.0	10.5	20.0	0.8	STCBB81-B912□3CL22	9100pF	26.0	18.5	11.5	22.5	0.8	STCBB81-B912□3DL22	9100pF	26.0	19.0	13.0	22.5	0.8			
STCBB81-B103□3AL20	0.010uF	24.0	18.5	11.0	20.0	0.8	STCBB81-B103□3CL22	0.010uF	26.0	19.0	12.0	22.5	0.8	STCBB81-B103□3DL22	0.010uF	26.0	20.0	13.5	22.5	0.8			
STCBB81-B123□3AL20	0.012uF	24.0	18.5	11.0	20.0	0.8	STCBB81-B123□3CL27	0.012uF	32.0	18.0	11.0	27.5	0.8	STCBB81-B123□3DL27	0.012uF	32.0	19.0	12.5	27.5	0.8			
STCBB81-B153□3AL20	0.015uF	24.0	18.5	11.0	20.0	0.8	STCBB81-B153□3CL27	0.015uF	32.0	20.5	11.5	27.5	0.8	STCBB81-B153□3DL27	0.015uF	32.0	20.5	13.5	27.5	0.8			
STCBB81-B183□3AL20	0.018uF	24.0	18.5	11.5	20.0	0.8	STCBB81-B183□3CL27	0.018uF	32.0	21.0	12.5	27.5	0.8	STCBB81-B183□3DL27	0.018uF	32.0	22.0	14.0	27.5	0.8			
STCBB81-B223□3AL27	0.022uF	32.0	17.5	10.0	27.5	0.8	STCBB81-B223□3CL27	0.022uF	32.0	24.0	14.0	27.5	0.8	STCBB81-B223□3DL27	0.022uF	32.0	24.0	15.5	27.5	0.8			
STCBB81-B273□3AL27	0.027uF	32.0	18.0	10.5	27.5	0.8	STCBB81-B273□3CL27	0.027uF	32.0	25.5	15.5	27.5	0.8	STCBB81-B273□3DL27	0.027uF	32.0	26.0	16.0	27.5	0.8			
STCBB81-B333□3AL27	0.033uF	32.0	20.0	11.0	27.5	0.8	STCBB81-B333□3CL27	0.033uF	32.0	27.0	16.5	27.5	0.8	STCBB81-B333□3DL27	0.033uF	32.0	27.5	17.0	27.5	0.8			
STCBB81-B363□3AL27	0.036uF	32.0	20.5	11.5	27.5	0.8	STCBB81-B363□3CL27	0.036uF	32.0	27.5	17.5	27.5	0.8	STCBB81-B363□3DL27	0.036uF	32.0	28.5	18.5	27.5	0.8			
STCBB81-B393□3AL27	0.039uF	32.0	21.0	12.0	27.5	0.8																	
STCBB81-B473□3AL27	0.047uF	32.0	21.5	12.5	27.5	0.8																	
STCBB81-B563□3AL27	0.056uF	32.0	22.0	13.0	27.5	0.8																	
STCBB81-B683□3AL27	0.068uF	32.0	23.0	14.0	27.5	0.8																	
STCBB81-B823□3AL27	0.082uF	32.0	23.5	14.5	27.5	0.8																	
STCBB81-B104□3AL27	0.10uF	32.0	24.0	15.0	27.5	0.8																	

Unit:mm