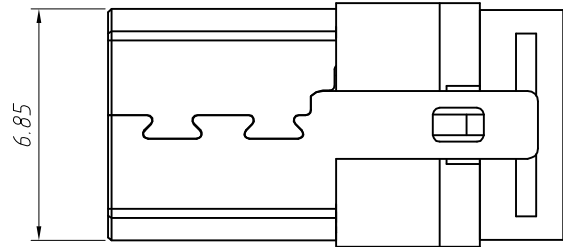
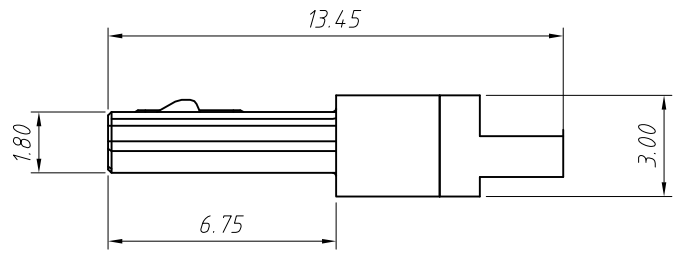
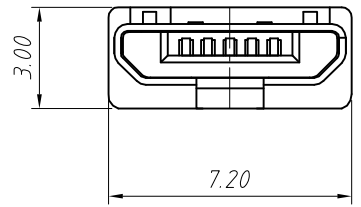
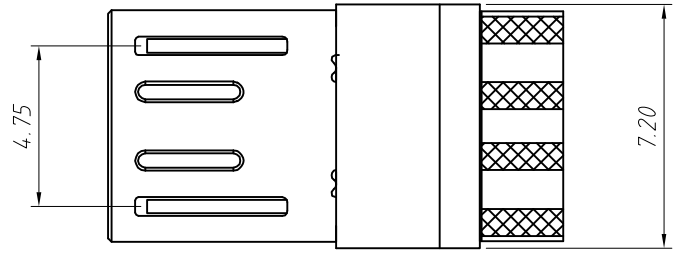


Material
 Housing:Hing Temperature Thermoplastics,
 UL94V-0 LCP,Black.
 Contact:Copper Alloy C2680.
 Shell:Copper Alloy C2680/SPCC.
 Finish:
 Contact:Plated Gold In Mating Area;
 Tin On Solder Talls.
 Shell:Nickel Plating.

Electrical:
 Current Rating:1.5A/Contact Terminal.
 Voltage Rating:30V DC
 Contact Resistance:30mΩ Max.
 Dielectric Withstanding Voltage:
 500 V AC AT Sea Level.
 Insulation Resistance:1000MΩ Min.
 Connector Mate and Unmated Force
 Mate Force:3.75kgf Max.
 Unmated Force:1.02kgf Min.
 Terminal Retention:1.2kgf Min.



GENERAL TOLERANCE		PROJECTION		Description:	CONN PLUG MICRO USB
X.	±0.50	UNITS	mm		TYPE B Solder T3.0,L6.8mm
.X	±0.25	SCALE	1:1		
.XX	±0.10	Draw by:	Jenny		
ANGLE TOLERANCE		Check by:		KLS P/N:	L-KLS1-235-1
X.	±5°	Date	2018-03-01		NingBo KLS ELECTRONIC CO.,L TD.
.X	±3°	SHEET	1 OF 1		
.XX	±2°				