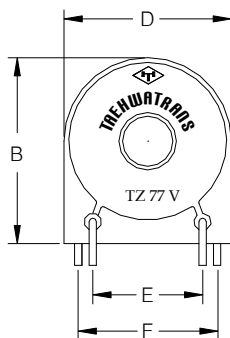
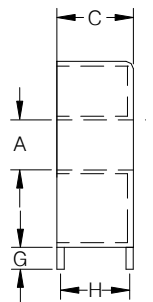


**TAEHWATRANS**

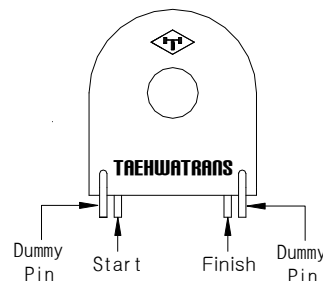
CURRENT TRANSFORMER SPECIFICATION

MODEL NO**CONNECTION****CUSTOMER****TZ77V****PCB MOUNTABLE****STANDARD TYPE****1. DRAWING**

< Front >

Diameter of Pin
1.0 mm

< Profile >



< Back >

2. DIMENSION

(Unit : mm/inch)

A (MIN)	B (MAX)	C (MAX)	D (MAX)	E (±0.3)	F (±0.3)	G (±0.5)	H (±0.3)
6.8	25.0	11.0	23.5	15.1	19.1	3.0	9.1
0.267"	0.984"	0.433"	0.925"	0.594"	0.752"	0.118"	0.358"

3. ELECTRICAL PROPERTIES

Standard Accuracy	0.2 Class (Meter 0.5 Class)	DC Resistance	124 ~ 136Ω
Turn Ratio	1 : 2,500	Frequency	50Hz / 60Hz
High Potential Voltage	a.c 2.5 KV / Min	Max Current	82A (At 1.14Ω)
Safety Certificate	TUV, UL	International Standard	Conforming to IEC62053-22
General Application	0.2 / 0.5 Class Indirect connected watt hour meter		

6. TESTING VALUE

50Hz 0.25A / 0.1mA		50Hz 5A / 2mA	
Ratio Error (%)	Phase Shift (min)	Ratio Error (%)	Phase shift (min)
-0.1 ~ 0	7 ± 5	-0.1 ~ 0	5 ± 5

TAEHWATRANS CO., LTD Tel : 82 31 315 8161-4

288-2, Misan-Dong, Sihung-City, Fax : 82 31 315 8165

Gyeonggi-Do, Korea, Email: sales@taehwatrans.com



This documents is drafted by TAEHWATRANS and shall not be revised and disclosed to the third parties without the permission of TAEHWATRANS.REV.TH03 09.10.07