

Blue PVC, with date code
(蓝色PVC, 表面喷码)

Insulation mat
(绝缘垫片)

Cell(电芯):LIR18500,

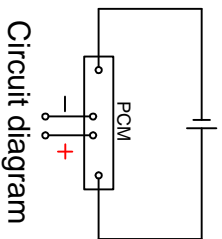
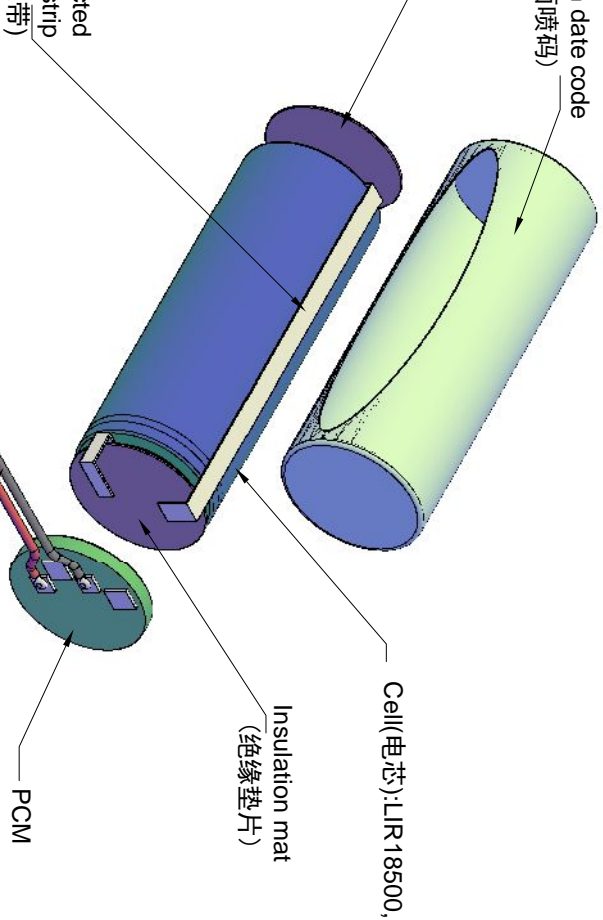
Insulation mat
(绝缘垫片)

Connected
Nickel strip
(连接镍带)

Wire引线:black黑(-) UL1571 AWG26

Wire引线:red红(+) UL1571 AWG26

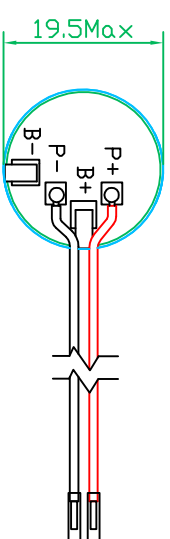
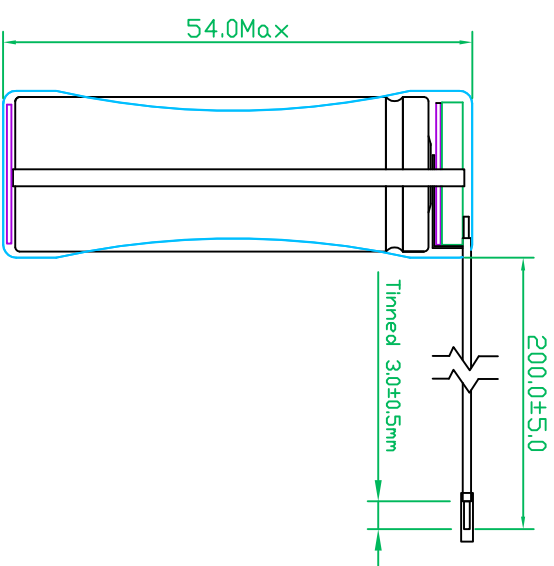
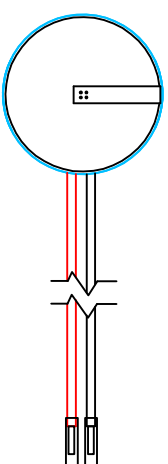
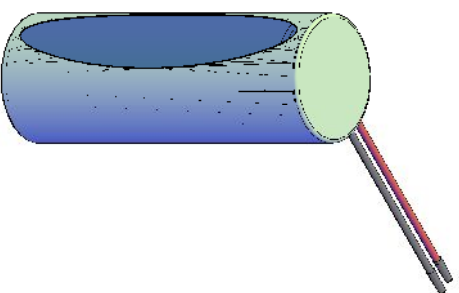
Adhesive tape(绝缘胶布)



Circuit diagram

Remark(备注):

1. Pack :3.7V 1400mAh With safety circuit,wires,Blue PVC, with date code.
电池组:3.7V 1400mAh. 带保护电路. 输出引线. 包蓝色PVC. 表面喷码.
2. PCM specification(保护板参数)
Over-charge protection voltage(过充保护电压):4.28±0.05V
Over-discharge protection voltage(过放保护电压):3.0±0.1V
Over current(过流值):2-6A
3. RoHS Compliant.
严格按照RoHS要求生产.



		Drawn:	leiyuanchad	Revise No.:	E4-2009
		Checked 1:	Lily	Projection:	
EMB BATTERY LIR18500-PCM-LD		Checked 2:		Page:	1/1
		Approved:		Scale:	1 : 1
Title	LIR18500-PCM-LD	Draw Date:	2016/11/04	Unit:	mm
File NO.	A13410				