

AneegFpv 5-12V 12CH CRSF/ELRS to PWM Converter Bend Pin Type Adapter Board 50Hz PWM Output 5-12V BEC

Description:

12 Channel PWM CRSF ELRS Adapter Board Black

Sheep to PWM CRSF to PWM ELRS to PWM

- Only compatible with CRSF protocol receivers (Black Sheep and ELRS);
- 12 PWM outputs (firmware higher than ELRS 3.0.0 can generate 12 proportional channels);
- CRSF signal acquisition LED indication;
- PWM output frequency 50Hz;
- The PWM port supports high-voltage servos;
- BEC power supply range 5-12V (determined by the bridge);
- Supports maximum 6S battery telemetry voltage feedback (RxBt);
- Size and weight: 32 mm X 28 mm, 5.2 g;
- It can be stacked and combined with the ELRS2.4/915 receiver from our store to form a 12-channel receiver; Connect the receiver's TXRX port to the TXRX adapter board via a serial port (make sure to check the receiver

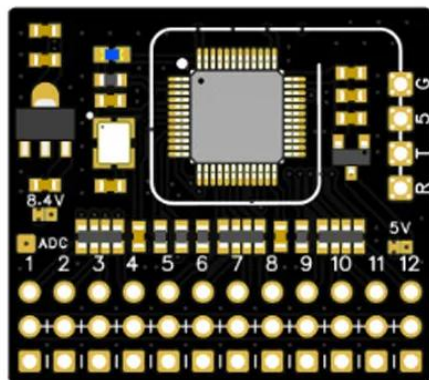
cable yourself)

Does the sequence correspond to the line sequence of the adapter plate and can it be coupled with pins?

The output needle can be chosen between straight and curved needles, and you can weld it yourself;

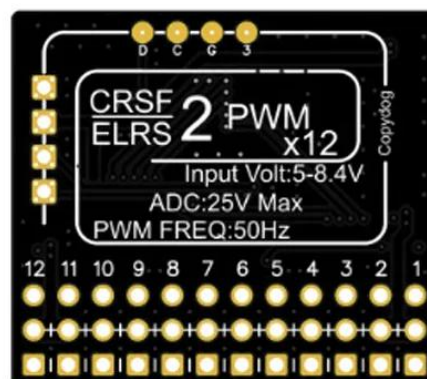
Note: The price shown is for the adapter board only and does not include the receiver shown in the image.

CRSF and ELRS receivers converted to 12 channel PWM



**CRSF/ELRS to PWM
Converter**

- Supports 12 channel PWM output
- Support 8.4V high-voltage servo motor
- Support maximum 6S battery voltage feedback
- Support ELRS3.0 full proportional channel



CRSF protocol 12 channel adapter board CRSF/ELRS to PWM Converter

