

Technical Parameters:

Rated power: 20W Maximum 30W

Stroke:

50mm/100mm/150mm/200mm/250mm/300mm/350mm/400mm/450mm/500mm

Permanent magnet DC motor drive;

Voltage: 12V,24V

Standard protection grade: IP54

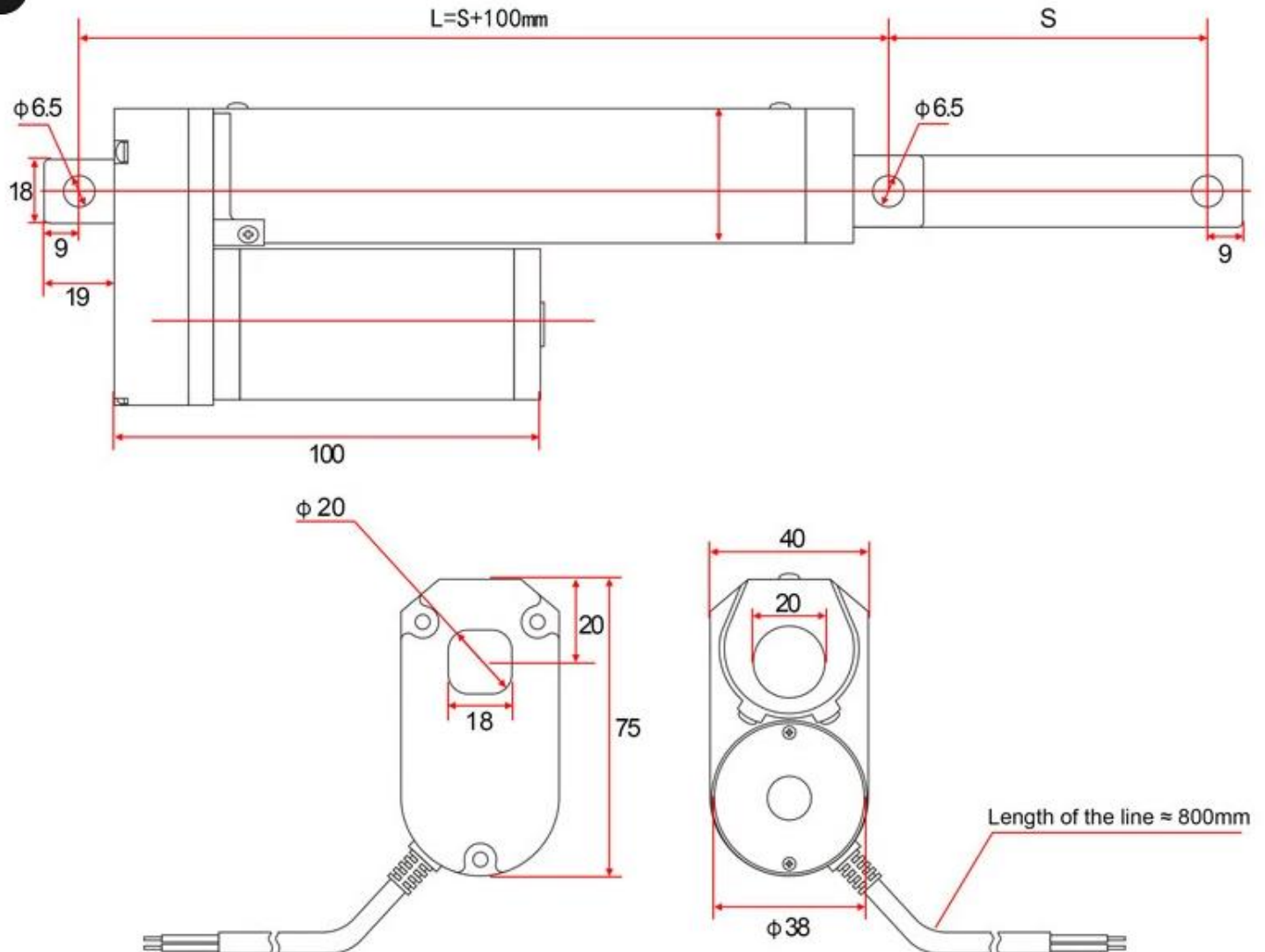
Material: aluminum alloy

Ambient temperature -20°C to +75°C.

Low noise design, noise level less than 42dB.

Application: Television console.couch for massage.Electric bed.Medical chair.Electric equipment

The self-locking force of the linear actuator is about 80%



L= Minimum installation distance

S= Effective stroke

Size introduction:

Stroke Length: means the movement length of linear actuator.

Retracted Length: means the length when linear actuator 100% fully closed.

Extended Length: means the length when linear actuator 100% fully open.

Stroke length introduction:

50mm Stroke, Retracted Length=155mm, Extended Length=205mm

100mm Stroke, Retracted Length=205mm, Extended Length=305mm

150mm Stroke, Retracted Length=255mm, Extended Length=405mm

200mm Stroke, Retracted Length=305mm, Extended Length=505mm

250mm Stroke, Retracted Length=355mm, Extended Length=605mm

300mm Stroke, Retracted Length=405mm, Extended Length=705mm

| | | | | | | | | |
|---------------|---|--------|--------|--------|--------|--------|-------|-------|
| Stroke | 30mm/50mm/100mm/150mm/200mm/250mm/300mm/350mm/400mm/450mm/500mm | | | | | | | |
| Voltage | DC12V/24V | | | | | | | |
| No-load speed | 90mm/s | 60mm/s | 35mm/s | 20mm/s | 15mm/s | 10mm/s | 6mm/s | 4mm/s |
| Max force | 50N | 100N | 300N | 500N | 700N | 1000N | 1200N | 1500N |

