

BLHELI-S 3-6S 60A

F405 V2

Stack Specifications:

MCU	STM32F405
Frequency	168MHz
GYRO	Gyro ICM-42688-P
OSD	AT7456E
Blackbox	16M Memory
Uarts	3 Set
Receiver	CRSF/SBUS/IBUS/DSM
I2C	Yes
Buzzer Pad	Yes
CURR Pad	Yes
ESC Signal	4 Set
BEC 3.3V	0.5A
BEC 5V	2A
BEC 9V	2A
BF LED	Yes
AIR UNIT Port	Yes
BEC Protection	Yes
Receiver Protection	Yes
TVS Protection	Yes
Input	6S Lipo
Soft Ware	Betaflight
Mounting	30.5x 30.5mm/M3
Size	36x38x8mm
Weight	9gtt

The Default Port:

UART 1	Receiver
UART 3	VTX
UART 6	TELE

Target: FURYD40SD

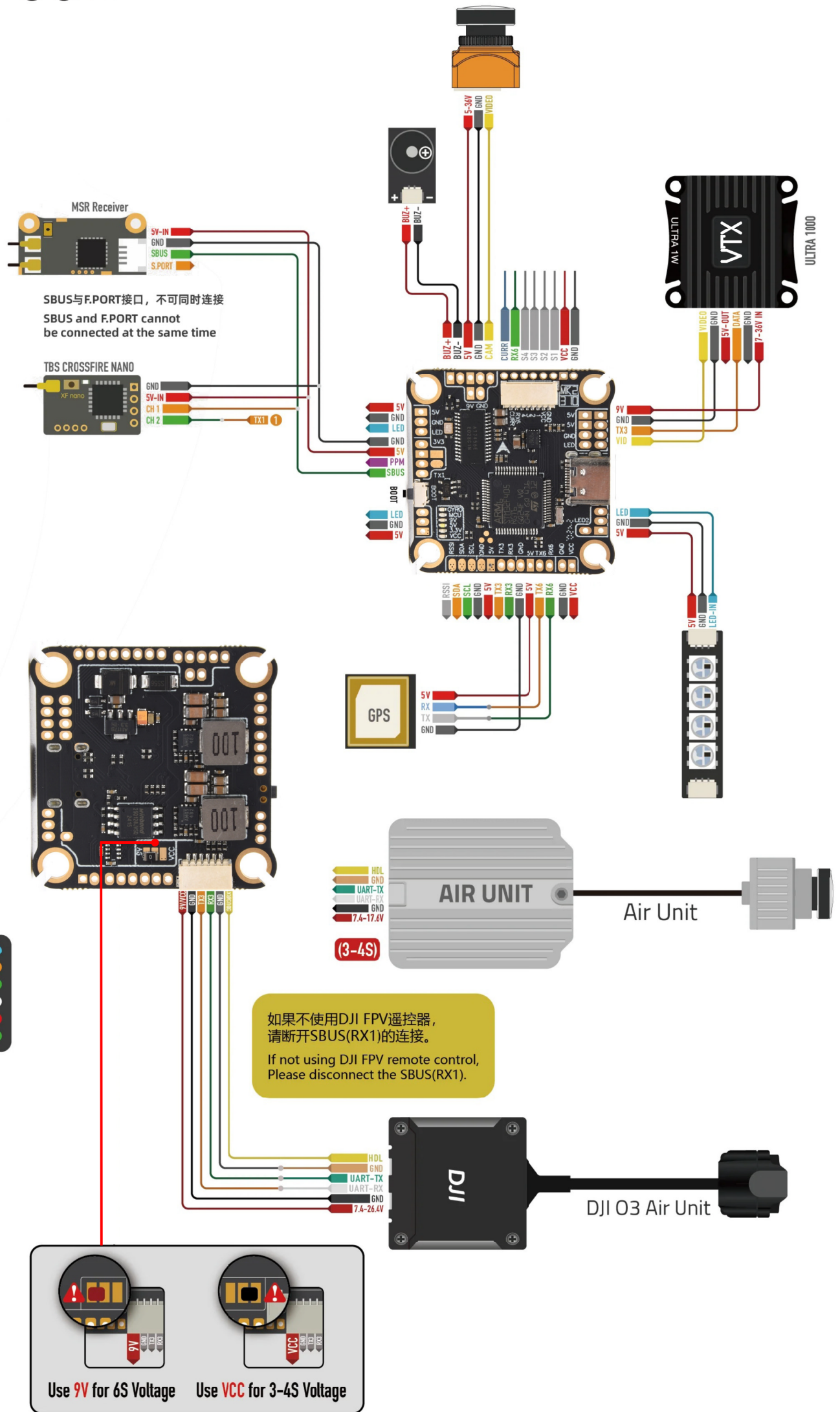
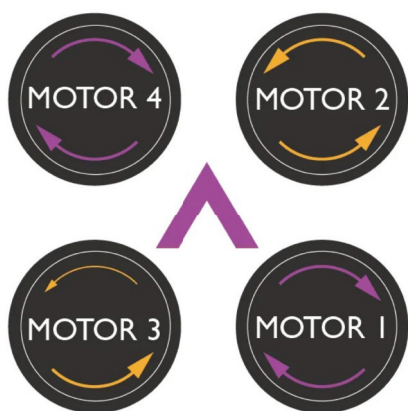
Main firmware	STM32 F405
Config file	FURYF40SD

Power indicator

Through the LED status (on/off), you can know whether the BEC works normally.

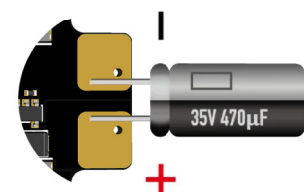
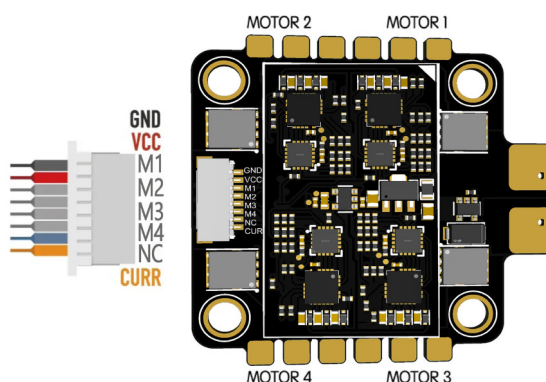
Please follow the flight control sequence.

	GYRO	Blue
	MCU	Orange
	9V	Green
	5V	White
	3.3V	Red
	VCC	Green



BLHELI-S 3-6S 60A

CURR	Yes
Output Current	60A
Peak Current	85A
Input	3-6S Lipo
BL	BLHeli S
Target	JH15
protocol	Dshot 300/600
Mounting	30.5x30.5mm, Ø 3
Size	44.7x43.0mm



Capacitor requested when using 6S battery

BLHELI-S 3-6S 60A		Amperage Meter	
Battery	0.00A	80	Scale[1/10th mV/A]
		0	Offset [mA]

Betaflight是开源软件, 自行刷写固件将可能导致产品工作不稳定。

为了你的安全, 地面站设置必须拆除螺旋桨。

Since Betaflight is open source software, and self-flashing the firmware will likely result in an unstable working product.

For your safety, the propeller must be removed for betaflight setup.