

### MODEL NO. : HCI1040 SERIES

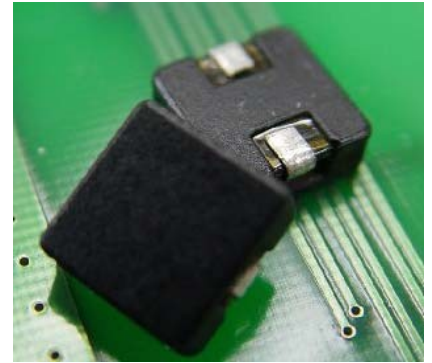


#### Features :

- \* SMD version.
- \* Low core loss and high efficiency performance.
- \* Close magnetic path for low leakage flux.
- \* Low DCR with flat wire design.
- \* Compliant with RoHS and Halogen free.

#### Application :

- \* DC/DC converter in power regulation system .
- \* Automobile .
- \* Routers.



#### Electrical Specification :

PART NO	INDUCTANCE (uH) $\pm 20\%$ @0 ADC	DCR $\pm 10\%$ (m $\Omega$ )	INDUCTANCE (uH) TYP @ TEMPERATURE RISE CURRENT (ADC)	TEMPERATURE RISE CURRENT (ADC) (NOTE 2)	SATURATION CURRENT (ADC) (NOTE 3)
HCI1040-R15	0.15 $\pm 30\%$	0.58	0.13	25	60.0
HCI1040-R34	0.34	1.10	0.27	24	35.0
HCI1040-R62	0.62	1.71	0.47	21	30.0
HCI1040-1R0	1.00	3.30	0.73	14	20.0
HCI1040-1R5	1.50	5.20	1.10	13	17.0
HCI1040-2R0	2.00	7.30	1.55	10.5	13.0
HCI1040-2R8	2.80	10.6	2.10	9.0	11.0
HCI1040-4R3	4.30	14.1	3.20	7.5	9.5
HCI1040-5R6	5.60	21.1	4.10	6.0	8.0

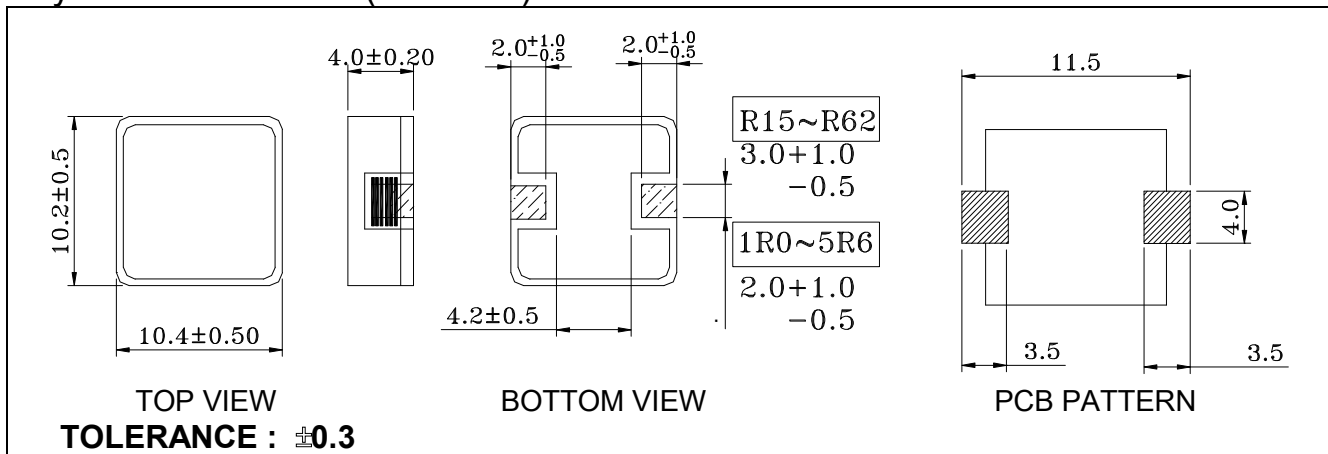
NOTE(1): Measuring condition : 100 KHZ, 0.1Vrms

NOTE(2):  $\Delta T=40^{\circ}\text{C}$  approximately under the temperature rise current.

NOTE(3): The saturation current indicates the value of DC current is approximately 30% lower than its initial value of inductance.

NOTE(4): Operating temperature range:  $-40^{\circ}\text{C} \sim +150^{\circ}\text{C}$

#### Physical Dimension : (unit :mm)



#### PACKAGING SPEC:

1. REEL SIZE & UNITS PER REEL : 13", 800PCS.
2. TAPE WIDTH: 24mm.
3. REEL WIDTH: 29.5mm.
4. COMPONENT PITCH: 16mm

INDUCTANCE vs DC BIAS:

