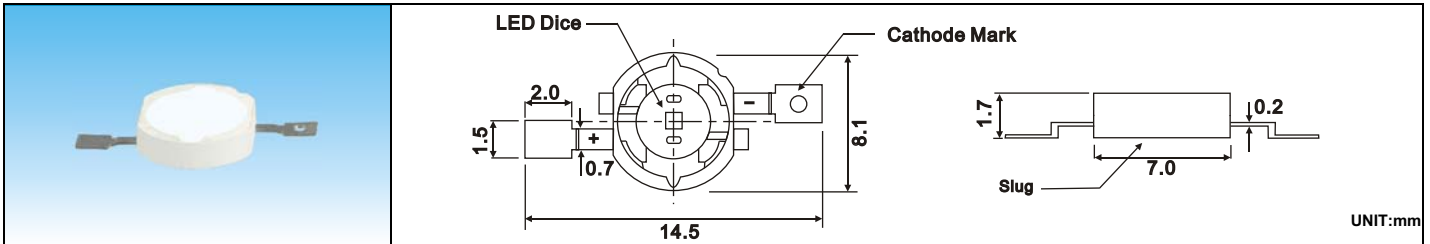




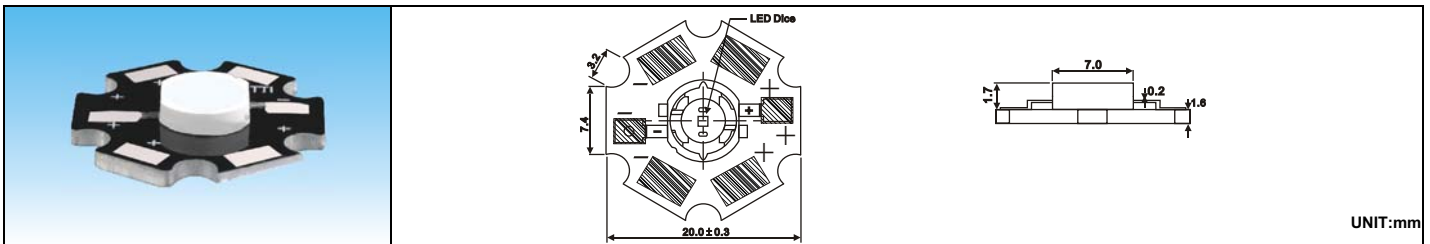
# High Power 3W For IR Reflow LEDs

IF=700mA Ta=25°C

Device No	Color		Wavelength(nm)		VF	Brightness(lm)	View
	Emitter	Lens	$\lambda p$	$\lambda d$	Typical (V)	IV	Angle $2\theta 1/2$



HPR8C-43K3G		Green	White diffused	520	525	3.6	100.0	110
HPR8C-44K3Y		Yellow		595	590	2.3	75.0	
HPR8C-45K3R		Red		635	625	2.3	85.0	
HPR8C-48K3B		Blue		462	465	3.6	36.0	
HPR8C-48K3BB		Blue		462	465	3.3	50.0	
HPR8C-49K3W		Pure White	Yellow diffused	6000°K		3.6	130.0	
HPR8C-49K3WB		Pure White		6000°K		3.3	155.0	
HPR8C-49K3YW		Warm White		3300°K		3.6	105.0	
HPR8C-49K3YWB		Warm White		3300°K		3.3	130.0	



HPR8C-43K3G/PCB		Green	White diffused	520	525	3.6	100.0	110
HPR8C-44K3Y/PCB		Yellow		595	590	2.3	75.0	
HPR8C-45K3R/PCB		Red		635	625	2.3	85.0	
HPR8C-48K3B/PCB		Blue		462	465	3.6	36.0	
HPR8C-48K3BB/PCB		Blue		462	465	3.3	50.0	
HPR8C-49K3W/PCB		Pure White	Yellow diffused	6000°K		3.6	130.0	
HPR8C-49K3WB/PCB		Pure White		6000°K		3.3	155.0	
HPR8C-49K3YW/PCB		Warm White		3300°K		3.6	105.0	
HPR8C-49K3YWB/PCB		Warm White		3300°K		3.3	130.0	