

## KFC-A06-H Tact switch:

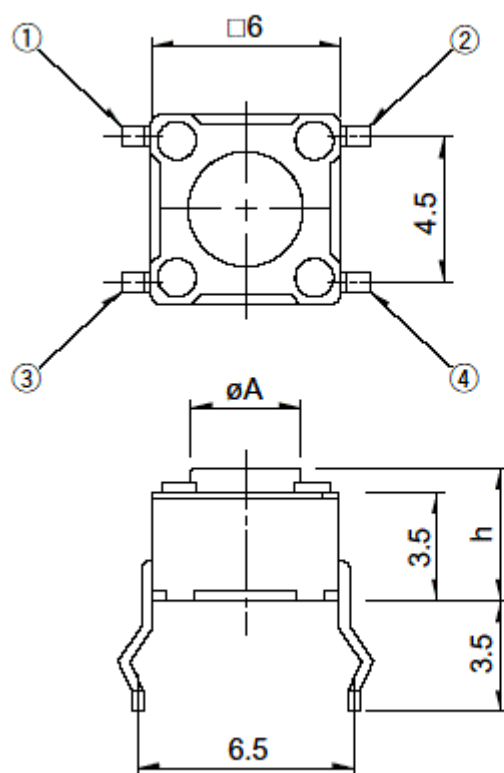
KFC-A06-H is an on/off electronic tact switch that is only on when the button is pressed or if there is a definitive change in pressure.

It was used for circuit board, there are many different kinds of height for the switch knob, the standard height range is 4.3mm to 23mm.

The Tactile Switch applications include: Low power, miniature devices, digital switching, anything where operator feedback is required (a switch confirmation coming from the switch being depressed) will find that the perfect choice is a Tactile switch.

**Pls check the datasheet below:**

Type:	Snap-in	Operating force:	0.98N
Operating Direction:	Top Push	Travel:	0.25mm
Operating Life:	Over 100,000 cycles	Initial contact resistance:	100mΩ max.
Stem color:	Black	Operating Temperature:	-40°C~+90°C
Stem height:	H=4.3-23mm	Series type:	Sharp feeling type
Rating (max.):	50mA 12V DC	Rating (min.):	10μA 1V DC
SPQ:	1,000pcs	OEM or ODM:	Available



Unit: mm

h	A
4.3-23	3.5

