

# PNR10S Series

10W, Open Frame, SIP Package AC/DC Power Converters

## Features

- ▶ Rated power: 10W Max.
- ▶ Universal input: 85~305VAC, 47~63Hz
- ▶ Regulated single output
- ▶ Isolation voltage 4000VAC
- ▶ Typical efficiency 75 ... 85%
- ▶ Energy saving, standby power only 0.1W
- ▶ Operating temperature range: -40~+85°C
- ▶ RoHS compliance
- ▶ Compact SIP package
- ▶ Over voltage, over current, and short circuit protection
- ▶ Meet IEC/EN/UL 62368-1, IEC/EN 61558, IEC/EN 60335 CISPR32, EN55032 Class B
- ▶ 3 year warranty



## Overview

PNR10S series are compact size and open frame AC/DC power converters, designed for energy meters, and high reliability industrial applications. They feature wide input voltage range 85~305VAC, low stand by power consumption, high efficiency, and class II reinforced insulation. They are designed to meet IEC/EN/UL62368-1, EN60335-1, EN61558-1, UKCA and EMC performance meets CISPR32, EN55032 Class B with external components, ideally suitable for industrial, and critical commercial applications.

## Model Numbers

Model Number	Input Voltage [VAC]	Output Voltage [VDC]	Output Current [mA] Max.	Ripple & Noise [mVp-p] Max.	Efficiency [%] Typ.	Capacitive Load [uF] Max.
PNR10S-033	85~305VAC 100~430VDC	3.3	2000	100	74	1500
PNR10S-050		5	2000	100	78	1500
PNR10S-090		9	1100	100	79	1000
PNR10S-120		12	840	100	83	680
PNR10S-150		15	670	100	83	470
PNR10S-240		24	420	100	84	330

\* Only typical models are listed, other models may be available, upon request.

## Electrical Specifications

Unless otherwise indicated, specifications are measured at  $T_A=25^{\circ}\text{C}$ , humidity<75%, nominal input voltage and rated output load.

Parameters	Condition	Min.	Typ.	Max.	Unit	Note
Input voltage range	AC in	85	-	305	VAC	
	DC in	100	-	430	VDC	
Input frequency		47	-	63	Hz	
Nominal input voltage		100	-	277	VAC	

### Electrical Specifications

Unless otherwise indicated, specifications are measured at  $T_A=25^{\circ}\text{C}$ , humidity<75%, nominal input voltage and rated output load.

Parameters	Condition	Min.	Typ.	Max.	Unit	Note
Input current	115VAC 230VAC	-	-	0.40 0.25	A	
Inrush current Cold start	115VAC 230VAC	-	18 35	-	A	
Leakage current	277VAC/50HZ			0.25	mA RMS	
Output voltage accuracy $I_{OUT}=10\%\sim 100\%$ of $I_{OUT, rated}$		-	$\pm 1$	$\pm 3$	%	
Line regulation Full load	$V_{OUT}=3.3\text{V}$ Others	-	$\pm 2.5$ $\pm 1.5$	-	%	
Load regulation $I_{OUT}=0\%\sim 100\%$ of $I_{OUT, rated}$		-	$\pm 3$	-	%	
Ripple and noise 20MHz bandwidth, peak to peak		-	80	150	mV	
Standby power consumption	230VAC	-	0.1	0.25	W	
Temperature coefficient		-	$\pm 0.15$	-	%/ $^{\circ}\text{C}$	
Hold-up time	115VAC 230VDC	-	8 40	-	mS	
Minimum load		0	-	-	%	
Over current protection	Automatic recovery	110	-	-	% $I_{OUT}$	
Over voltage protection Hiccup or clamping by Zener diode	$V_{OUT}=3.3, 5\text{V}$ $V_{OUT}=9\text{V}$ $V_{OUT}=12\text{V}$ $V_{OUT}=15\text{V}$ $V_{OUT}=24\text{V}$	-	-	9 12 16 20 30	VDC	
Short circuit protection	Automatic recovery	Continuous, hiccup mode				
Recommended external fuse		1A, slow blow, *required*				

\* Ripple and noise measured at 20MHz of bandwidth by using a 12" twisted pair-wire terminated with a 1uF ceramic capacitor and a 10uF electrolytic capacitor in parallel.

### General Specifications

Parameters	Condition	Min.	Typ.	Max.	Unit	Note
Isolation voltage 1 minute, leakage current 5mA max	Input to Output	4000	-	-	VAC	
Insulation resistance 500VDC	Input to Output	100			M Ohm	

# PNR10S Series



10W, Open Frame, SIP Package AC/DC Power Converters

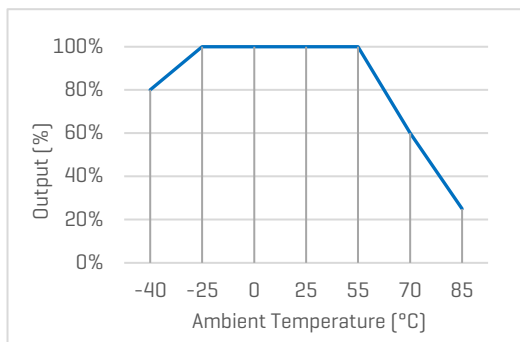
## General Specifications

Parameters	Condition	Min.	Typ.	Max.	Unit	Note
Operating temperature range	See "Derating Curve"	-40	-	85	°C	
Storage temperature		-40	-	105	°C	
Storage humidity		-	-	95	%RH	
Switching frequency		-	65	-	KHz	
Soldering temperature	Wave Manual	-	260 360	-	°C	
Cooling method		Free air convection				
Safety class		Class II, no FG				
MTBF	MIL-HDBK-217F	>1,000,000 Hours, 25°C				
Design based on standards		IEC/EN/UL 62368, EN 60335, EN 61558, UKCA				
Safety certifications		IEC/EN 62368-1				
EMC [1] With External Circuit as shown in "Figure 1" [2] With External Circuit as shown in "Figure 2"	CE ESD RS EFT EFT Surge Surge CS	CISPR32, EN55032 Class B, [2] IEC/EN61000-4-2, Contact ±6kV, Air ±8kV, Criteria B IEC/EN61000-4-3, 10V/m, Criteria A IEC/EN61000-4-4, ±2kV, Criteria B, [1] IEC/EN61000-4-4, ±4kV, Criteria B, [2] IEC/EN61000-4-5, Line to Line ±1kV, Criteria B, [1] IEC/EN61000-4-5, Line to Line ±2kV, Criteria B, [2] IEC/EN61000-4-6, 10Vrms, Criteria A				
Size, and Weight	Default package	32.0x14.5x20mm, 10g Typ.				

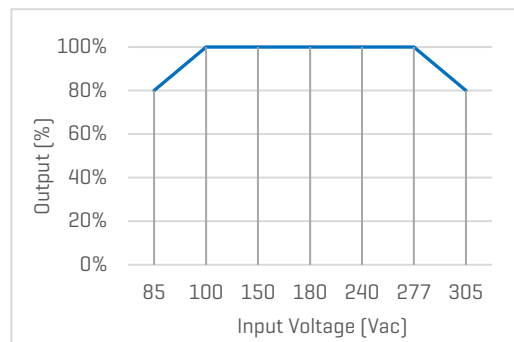
## Characteristic Curves

### Derating Curves

Output vs Ambient Temperature



Output vs Input Voltage



### Recommended External Circuits

#### Typical External Circuit

\*This circuit is the basic design reference, components with “\*” are required for the converter’s operating.

\*FUSE\* to be 1A, 300V, slow blow and is also required for safety, R1\* is 6.8 Ohm, 3W, wire-wound resistor

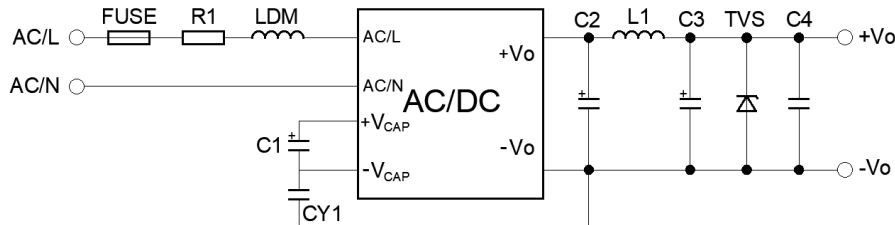


Figure 1. Typical external circuit

#### Recommended Component Spec [Table 1]

V <sub>OUT</sub> [V]	C1*	C2*	C3*	C4	CY1*	LDM*	TVS
3.3, 5	22uF, 450V	820uF, 16V	150uF, 25V	0.1uF, 50V	1nF, 400VAC	2.2uH, 6.5A	SMBJ7.0A
9, 12	22uF, 450V	470uF, 25V	150uF, 25V	0.1uF, 50V	1nF, 400VAC	2.2uH, 6.5A	SMBJ12A
15, 24	22uF, 450V	470uF, 35V	100uF, 35V	0.1uF, 50V	1nF, 400VAC	3.3uH, 5A	SMBJ20A

#### Circuit for EMC Enhancement

\*This application circuit is recommended for EMC enhancement. It is not mandatory if this is not critical in the application.

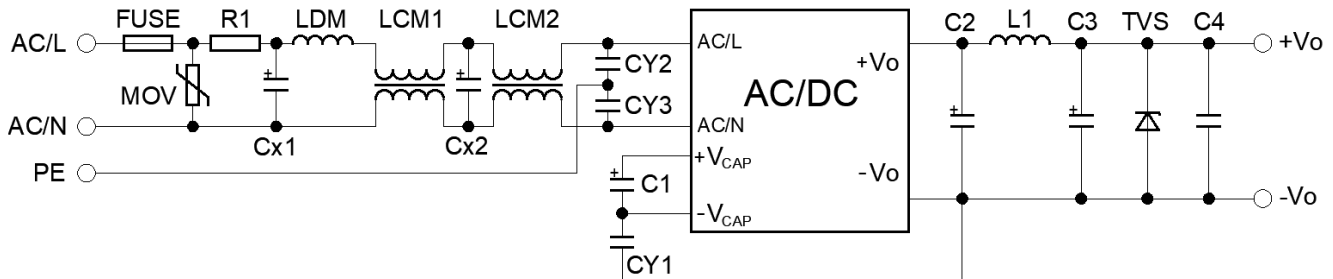


Figure 2. External circuit design for EMC enhancement

#### Recommended Component Spec [Table 2]

Item	FUSE*	MOV	Cx1, Cx2	LDM	LCM1	LCM2	CY1, CY2, CY3
Spec	2A, 300V	S14K350	0.1uF, 310VAC	2.2mH, 0.4A	200uH, 0.8A	12.6mH, 0.5A min.	1nF, 400VAC

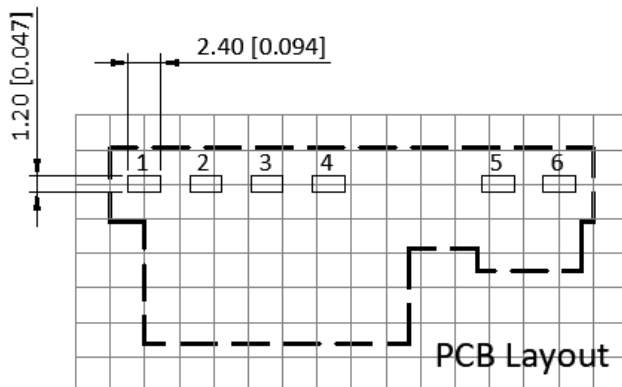
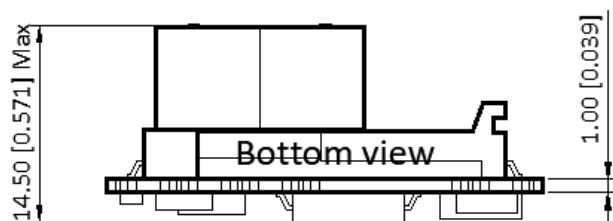
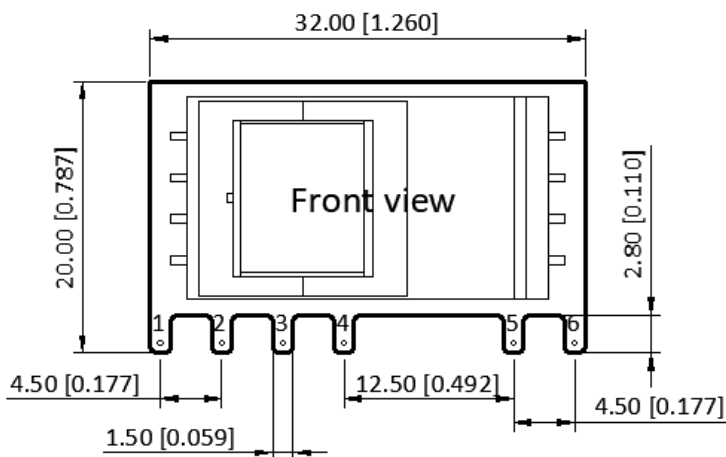
\*Components above with “\*” are required for the converter’s operating.

\*Refer to Table 1 for other components that not shown in Table 2

# PNR10S Series

10W, Open Frame, SIP Package AC/DC Power Converters

## Mechanical Specifications



### Pin Definition

Pin #	Single Out
1	AC [L]
2	AC [N]
3	+V [CAP]
4	-V [CAP]
5	-V <sub>OUT</sub>
6	+V <sub>OUT</sub>

\* Unless otherwise specified unit: mm [inch]

\* General tolerance:  $\pm 1.00$  [ $\pm 0.040$ ]

\* Pin thickness:  $\pm 0.10$  [ $\pm 0.004$ ]

\* Footprint grid 2.54 x 2.54 mm

### FAVOTEK LIMITED

#17 Canton Road, Tsim Sha Tsui, Kowloon, Hong Kong  
Tel: +852 8191 6662 Eml: info@favotek.com  
www.favotek.com

Favotek reserves the right to make changes to the product at any time without notice. Information provided by Favotek is believed to be accurate and reliable. However, no responsibility is assumed by Favotek for its use, nor for any infringements of patents or other rights of third parties which may result from its use.