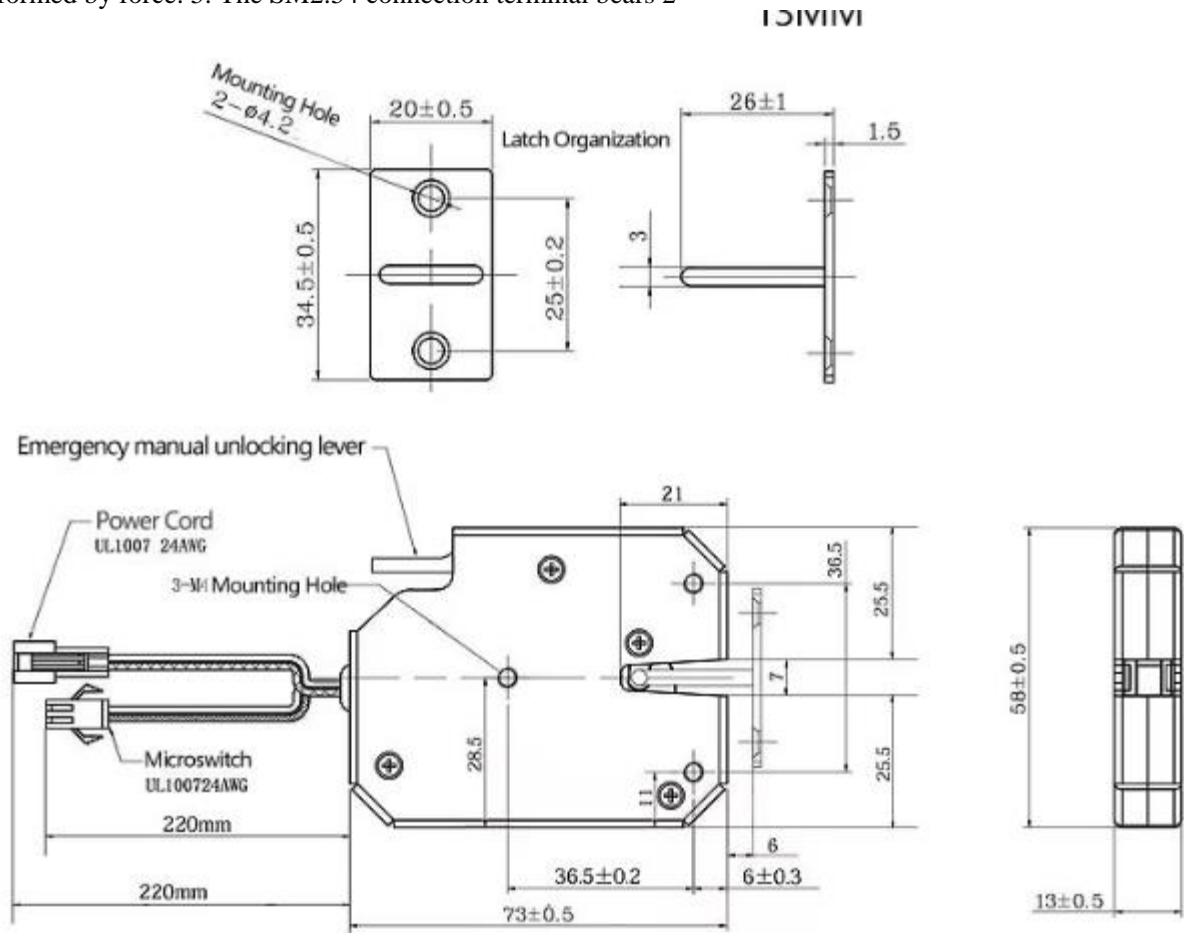


PRODUCT INFORMATION

MODEL	XG5873
BRAND	Sary
product name	Magnetic Lock
Size	73 * 58 * 13mm
product weight	0.17
product material	Zinc Alloy
Power-on time	500ms
working voltage	DC 5v/12V
working mode	power-on eject/power-off door lock
working humidity	-15 ° ~ 55 ° (no ice, no condensation)
Scope of application	all kinds of lattice cabinets, vending machines, filing cabinets, mobile phone cabinets, lockers, changing

Product Description

1. Compact structure design, free up more space for lockers 2. Built-in micro switch contact signal feedback, life expectancy up to 100,000 times 3. Electromagnetic drive, support DC5V/12V 4. Safety: The lock shell is made of high-quality zinc alloy by one-time stamping, which has good anti-rust and anti-corrosion effect, and will not be deformed by force. 5. The SM2.54 connection terminal bears 2



pulling force without falling off

0N

