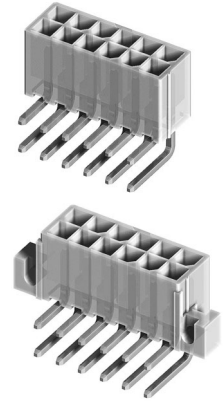


CP-014 Series Right Angle DIP Solder Headers

- Option with mounting ears or pegs
- Mates with CP-011 connector
- Nylon 66 UL 94V-0 or V-2 insulator material

RoHS Compliant



UL **UL** :E159616

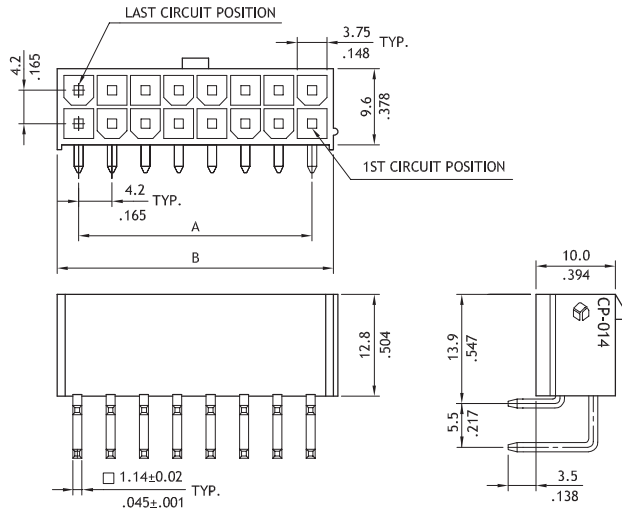
Ordering code

1 CP - **01** **2** **4** **3** **24** **4** **1** **0** **5** **0** **6** **0**

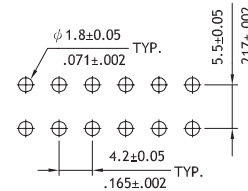
- 1** Series No.
- 2** Type of Connector:
4= Right angle header
- 3** No of Circuits :
See below table
- 4** Plating code:
1= Tin over Nickel
- 5** Variation:
0= UL 94V-2, with mounting ears
1= UL 94V-2, without mounting ears
2= UL 94V-0, with mounting ears
3= UL 94V-0, without mounting ears
- 6** Other options:
0= Standard
Special options consult manufacturer

P/N CP-014**110 / CP-014**130

PWAXXR

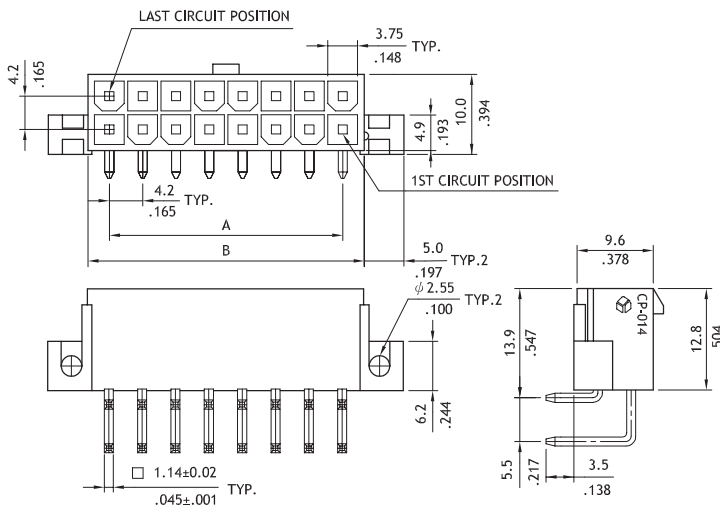


Circuits	Dimension	
	A	B
2	-	6.0(.236)
4	4.2(.165)	10.2(.402)
6	8.4(.331)	14.4(.567)
8	12.6(.496)	18.6(.732)
10	16.8(.661)	22.8(.898)
12	21.0(.827)	27.0(1.063)
14	25.2(.992)	31.2(1.228)
16	29.4(1.157)	35.4(1.394)
18	33.6(1.322)	39.6(1.559)
20	37.8(1.487)	43.8(1.724)
22	42.0(1.652)	48.0(1.890)
24	46.2(1.817)	52.2(2.055)

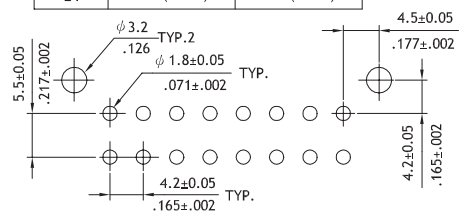


Recommended P.C. Board Layout

P/N CP-014**100 / CP-014**120



Circuits	Dimension	
	A	B
2	-	6.0(.236)
4	4.2(.165)	10.2(.402)
6	8.4(.331)	14.4(.567)
8	12.6(.496)	18.6(.732)
10	16.8(.661)	22.8(.898)
12	21.0(.827)	27.0(1.063)
14	25.2(.992)	31.2(1.228)
16	29.4(1.157)	35.4(1.394)
18	33.6(1.322)	39.6(1.559)
20	37.8(1.487)	43.8(1.724)
22	42.0(1.652)	48.0(1.890)
24	46.2(1.817)	52.2(2.055)



Recommended P.C. Board Layout