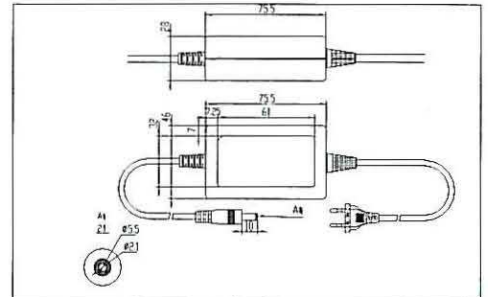


DESK TOP CABLE TO CABLE AC/DC ADAPTER ADPV66 series (1-12W)



Features

- Universal AC input/Full range
- No load power consumption < 0.75W ,
- Meet energy star level III(CEC)
- Desk top cable to cable
- Class II power (Without earth pin)
- Protections : Short circuit /overload/over voltage/ over temp.
- Full enclosed plastic case
- Topology : Top switch circuit
- Approvals : CE/CCC
- 1 year warranty



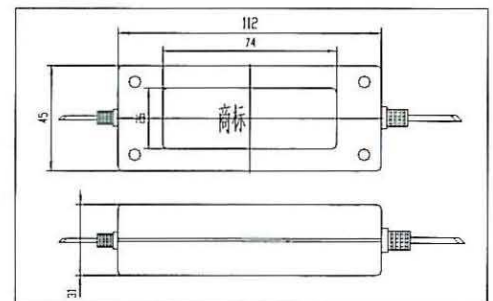
MODEL	INPUT	OUTPUT	DIMENSION(mm)
ADPV66A	90-264VAC	12VDC@1A	75.5x46x28
ADPV66B	90-264VAC	9VDC@1.0A	75.5x46x28
ADPV66C	90-264VAC	6VDC@1.8A	75.5x46x28
ADPV66D	90-264VAC	5VDC@2A	75.5x46x28
ADPV66F	90-264VAC	24VDC@0.5A	75.5x46x28

ADP1512 series (15-25W)



Features

- Universal AC input/Full range
- No load power consumption < 0.75W ,
- Meet energy star level III(CEC)
- Desk top cable to cable
- Class II power (Without earth pin)
- Protections : Short circuit /overload/over voltage/ over temp.
- Full enclosed plastic case
- Topology : Top switch circuit
- Approvals : CE/CCC
- 1 year warranty



MODEL	INPUT	OUTPUT	DIMENSION(mm)
ADP1512A	90-264VAC	12VDC@2A	112x45x31
ADP1512B	90-264VAC	9VDC@2.2A	112x45x31
ADP1512C	90-264VAC	13.8VDC@1.5A	112x45x31