



Bovista is the development of a new, individually adaptable enclosure for use in building automation systems and many other fields of electronics. Three basic sizes, each in white and grey, are available.

The enclosure base can be supplied with or without ventilation. In each case, eight different lid types, with different sizes and shapes, can be fitted to the base.

In addition to a smooth design, the customer can choose between lids with a membrane keypad area, design front or a hinged lid.

To fit the lid, simply snap it onto the base; the constructional design allows for horizontal or vertical fitting.

The enclosure can be fitted to the wall by means of the integrated keyholes in the base or by the snap-on wall fitting plate.

In addition, as standard this plate has two cut-outs so that the enclosure can be used in combination with flush-mounted sockets.

In addition to printed surfaces and mechanical processing, (e.g. for display cut-outs), BOPLA also offers customer-specific membrane keypads.

Enclosure

material: ABS (BVT-MB and BVL-MB made of PA6 15% GF); flush-mounted enclosure: steel panel, galvanised; front frame: powder-coated; for technical data see pages 646-650.

Colour: Bases and wall fittings agate grey, similar to RAL 7038 or pure white, similar to RAL 9010; lids light grey, similar to RAL 7035 or pure white, similar to RAL 9010; module bridges light grey, similar to RAL 7035; special colours on request; BVT/BVL-FO-9010 pure white, similar to RAL 9010; BVT/BVL-FO-7035 light grey, similar to RAL 7035 (available on request).

Ingress

protection: Acc. to DIN EN 60529 depending on unit construction up to IP 40; if used with:
 - bases with ventilation, up to IP 30
 - lids with secondary flap, up to IP 20.

Accessories (additional charge):

- BVT-WB: Bovista Compact wall fixing
- BVL-WB: Bovista Control wall fixing
- BVT-WB2: Bovista Compact wall fixing 2
- BVT-MB: Bovista Compact module bridges (1 PU = 10 pcs)
- BVL-MB: Bovista Control module bridges (1 PU = 10 pcs)
- BVT-UP: Bovista Compact Unterputzgehäuse
- BVT-FO-9010: Bovista Compact front frame pure white, similar to RAL 9010
- BVT-FO-7035: Bovista Compact front frame light grey, similar to RAL 7035*
- BVL-UP: Bovista Control flush-mounted enclosure
- BVL-FO-9010: Bovista Control front frame pure white, similar to RAL 9010
- BVL-FO-7035: Bovista Control front frame light grey, similar to RAL 7035*

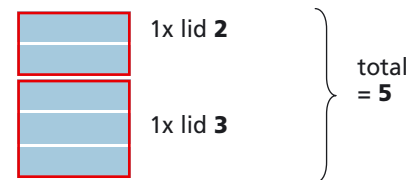
*available on request

Hints on selecting the lids:

One base and several lids are needed in order to complete a Bovista enclosure. The various lids are available in sizes 1, 2 and 3.

The actual size is also shown in the product designation, e.g. lid "1" = smallest size. In order to cover a large base (UT) completely with lids, the numbers of the sizes in the product designation of the selected lids must total "5".

Example:

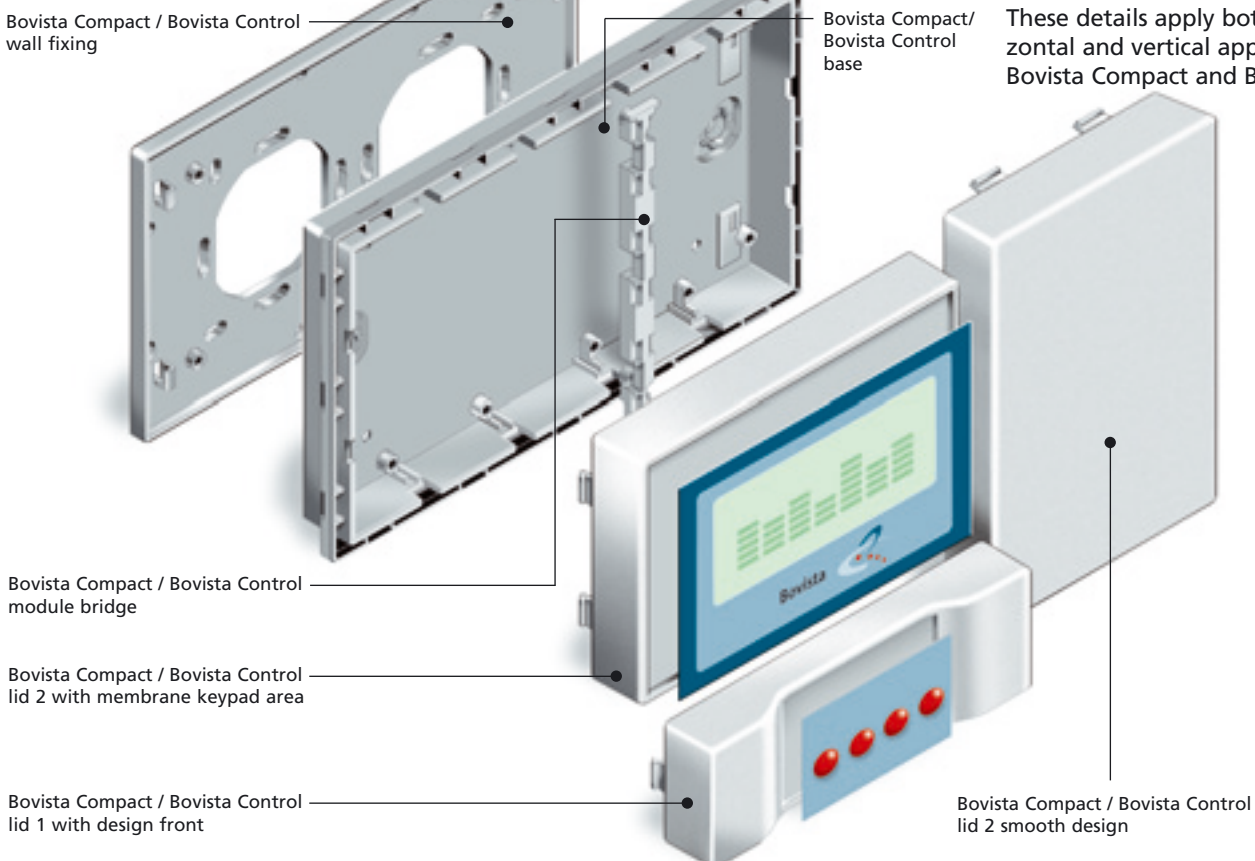


In order to cover a small base (UT2) completely with lids, the numbers of the sizes in the product designation of the selected lids must total "2".

Example UT2:



These details apply both to the horizontal and vertical application for both Bovista Compact and Bovista Control.



Bovista extension variants



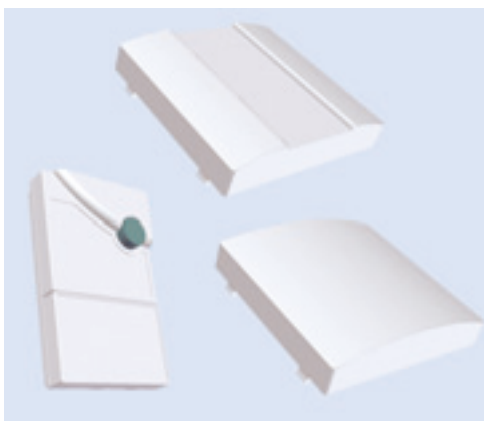
Thanks to the different lid designs which are available, the Bovista enclosure system offers an almost unlimited range of combinations.

The photos on this double page show some of the possible combinations.

Details of the combination of the illustrated enclosures can be found in the overview tables.

The enclosure lids and bases are each available in grey and white.

Examples of customer-specific special lids:



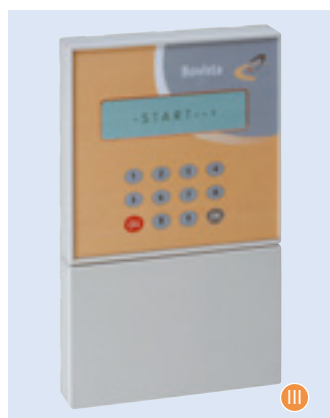
Horizontal application (for Bovista Compact and Bovista Control)

	Bases		Bases 2	Lids 1			Lids 2		Lids 3		
Example	BVT-/BVL-UT	BVT-/BVL-UT-L	BVT-UT2/UT2-L	BVT-/BVL-OT1	BVT-/BVL-OT1-F	BVT-/BVL-OT1-D	BVT-/BVL-OT2	BVT-/BVL-OT2-F	BVT-/BVL-OT3	BVT-/BVL-OT3-F	BVT-/BVL-OT3-SK
I	•			•	•						•
II *		•				•	•	•			
III	•			••						•	
IV	•							•			•
V		•					•			•	
VI *	•					•	•	•			
VII		•						•	•		
VIII **			•		•	•					
IX **			•					•			

* With this variant, a module bridge is required before the lids are fitted.

** BVT-UT2 + BVT-UT2-L can be combined with 2 x OT1 or with 1 x OT2.





Vertical application (for Bovista Compact and Bovista Control)

	Bases		Bases 2	Lids 1			Lids 2		Lids 3		
Example	BVT-/BVL-UT	BVT-/BVL-UT-L	BVT-UT2/UT2-L	BVT-/BVL-OT1	BVT-/BVL-OT1-F	BVT-/BVL-OT1-D	BVT-/BVL-OT2	BVT-/BVL-OT2-F	BVT-/BVL-OT3	BVT-/BVL-OT3-F	BVT-/BVL-OT3-SK
I	●				●	●					●
II		●						●			●
III	●						●			●	
IV	●			●		●				●	
V		●					●	●	●		
VI*	●						●	●	●		
VII		●						●	●		
VIII**			●	●	●						
IX**			●					●			



* With this variant, a module bridge is required before the lids are fitted.

** BVT-UT2 + BVT-UT2-L can be combined with 2 x OT1 or with 1 x OT2.





Bovista Compact



BVT-UT(-L)
Base (with ventilation)



BVT-UT2(-L)
Base 2 (with ventilation)

Both bases are suitable for horizontal and vertical use. The enclosure can be fixed to the wall by means of the integrated keyholes or the snap-on wall-fixing BVT-WB which is available as an accessory (see pages 44-45). The base is fitted with grooves for bulkhead walls which separate terminal sections from each other if necessary. In addition, Bovista Compact bases have fixing domes to accept PCBs.

Base with and without ventilation

Order designation

Model	agate grey		pure white			Designation
	Order no.	Order no.	L	W	H	
BVT-UT	40001000	40101000	200	120	18	Bovista Compact base
BVT-UT-L	40001100	40101100	200	120	18	Bovista Compact base with ventilation

Scope of delivery:

1 base

Note:

All Bovista lids can be snapped directly onto the longitudinal sides of the bases. If a lid is turned 90° before being placed on the base, module bridges BVT-MB (pages 44-45) need to be fitted so that the lids can be snapped on and stabilised. If module bridges are used, PCBs must be processed according to the adjacent drawings.

Caps EG-AK, which are used to cover the keyholes after fixing to the wall, can be ordered separately. Order no. 33000100, PU = 2 pcs Colour: agate grey, similar to RAL 7038

Base 2 with and without ventilation

Order designation

Model	agate grey		pure white			Designation
	Order no.	Order no.	L	W	H	
BVT-UT2	40001200	40101200	120	80	18	Bovista Compact base 2
BVT-UT2-L	40001300	40101300	120	80	18	Bovista Compact base 2 with ventilation

Scope of delivery:

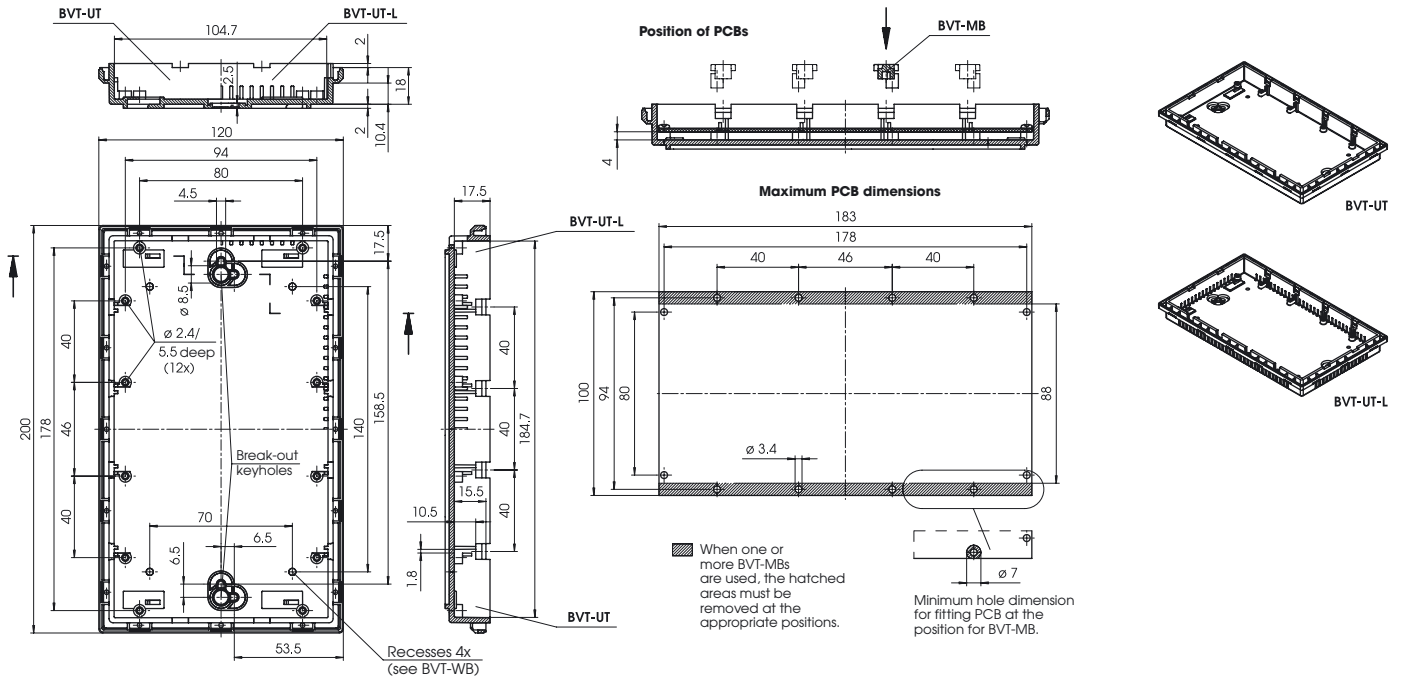
1 base

Note:

In addition to a smooth design, lids with a membrane keypad surface or a design front can be combined with Bovista Compact bases 2.

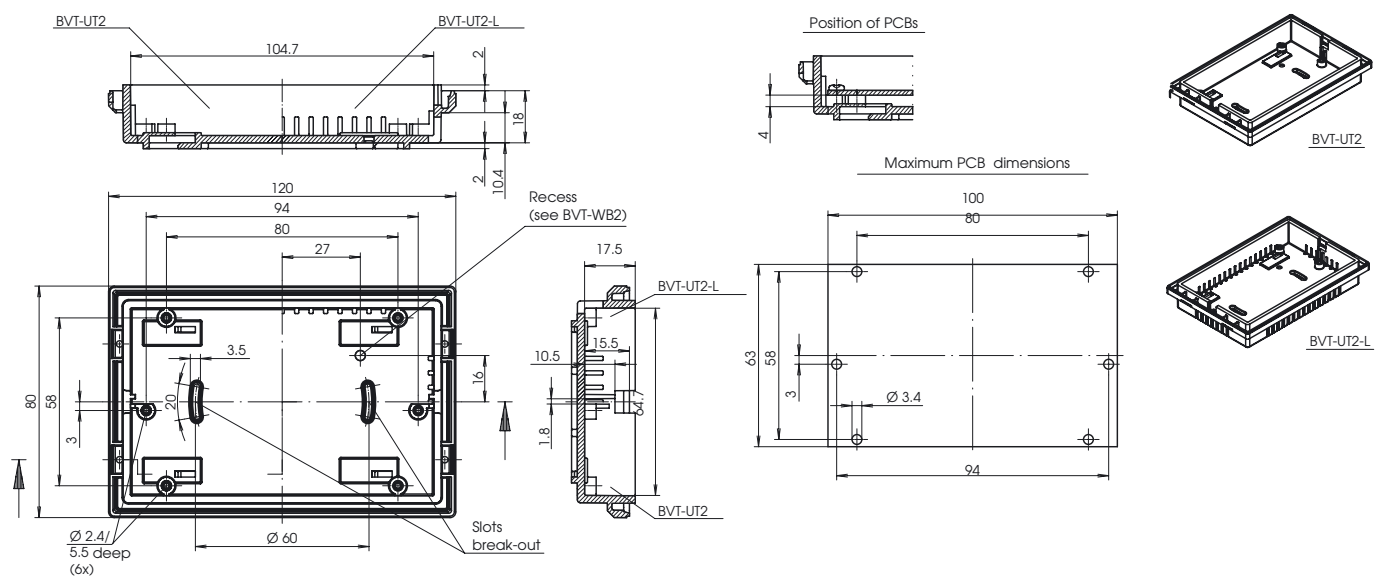
Fit the lids by latching them onto the base.

BVT-UT / BVT-UT-L



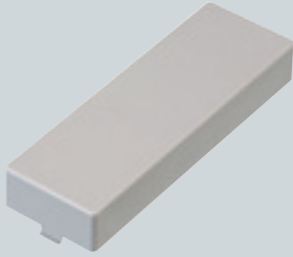
Z-2802167

BVT-UT2 / BVT-UT2-L

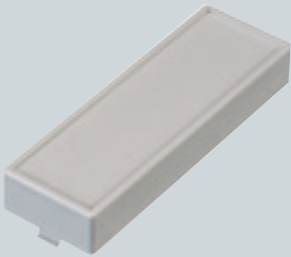


Z-2802238

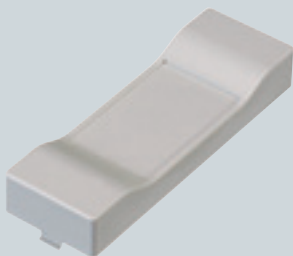
Bovista Compact



BVT-OT1
Lid 1 smooth design



BVT-OT1-F
Lid 1 with membrane keypad area
The lid is provided with a 1.5 mm recessed membrane keypad area.



BVT-OT1-D
Lid 1 with design front
The lid is provided with a 0.7 mm recessed membrane keypad area.

Lid 1 smooth design

Order designation

Model	Order no.		L	W	H	Designation
	light grey	pure white				
BVT-OT1	40002100	40102100	120	40	18	Bovista Compact lid 1

Scope of delivery:

1 lid

Note:

The lid is fitted with fixing domes for PCBs.

Lid 1 with membrane keypad area

Order designation

Model	Order no.		L	W	H	Designation
	light grey	pure white				
BVT-OT1-F	40002110	40102110	120	40	18	Bovista Compact lid 1 with membrane keypad area

Scope of delivery:

1 lid

Note:

The lid is fitted with fixing domes for PCBs.

Lid 1 with design front

Order designation

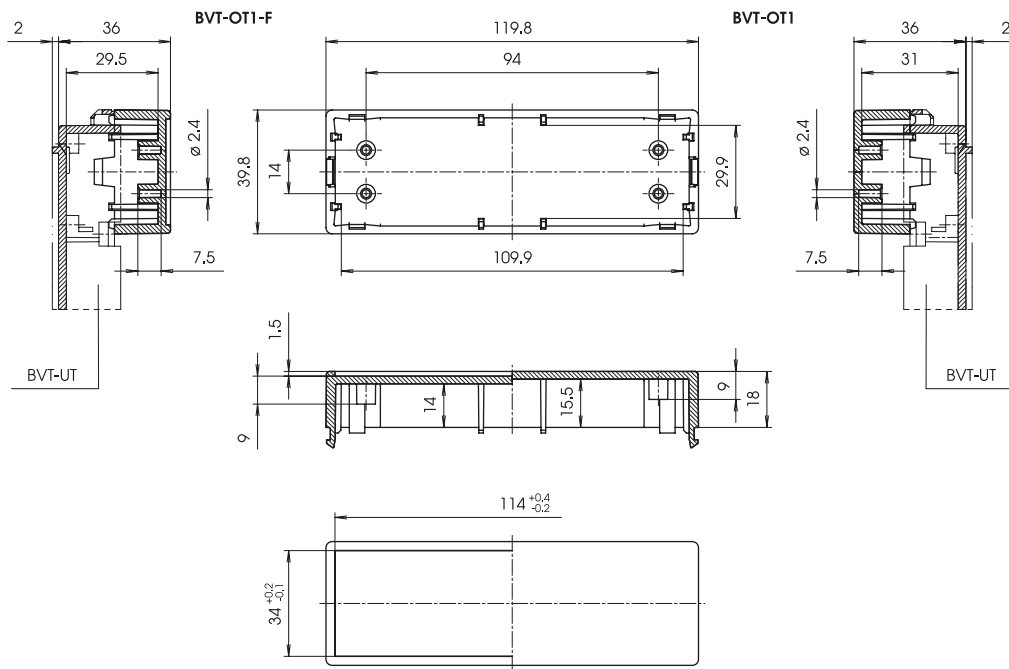
Model	Order no.		L	W	H	Designation
	light grey	pure white				
BVT-OT1-D	40002120	40102120	120	40	18	Bovista Compact lid 1 with design front

Scope of delivery:

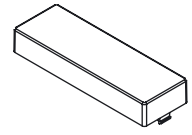
1 lid

Note:

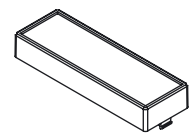
The lid is fitted with fixing domes for PCBs.



BVT-OT1 / BVT-OT1-F

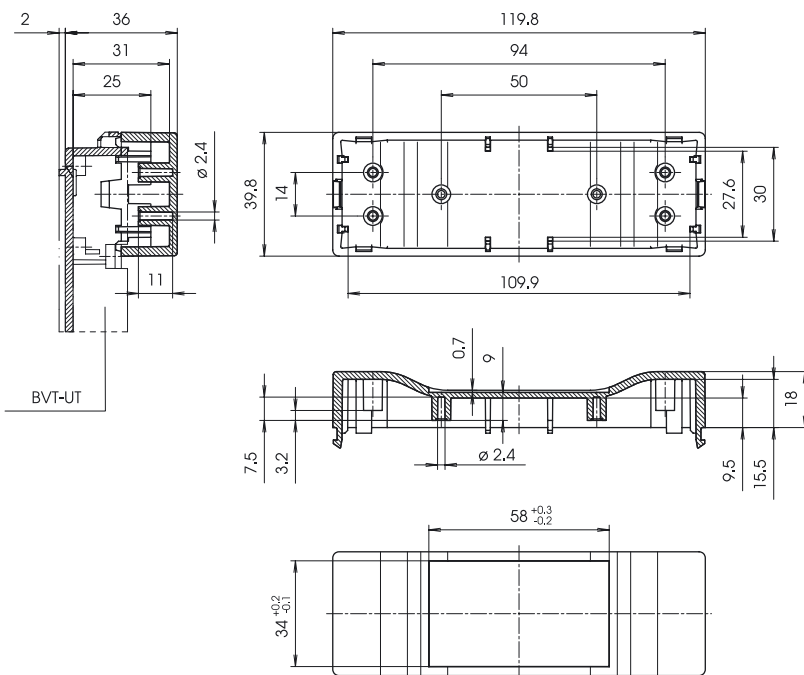


BVT-OT1

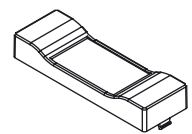


BVT-OT1-F

Z-2802168



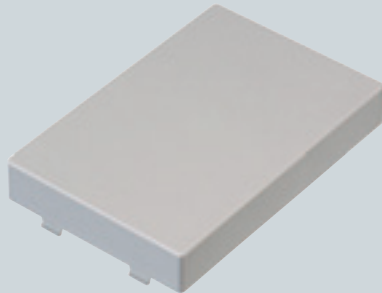
BVT-OT1-D



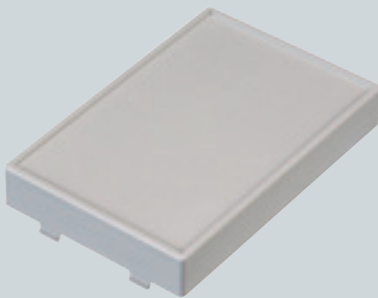
Z-2802169



Bovista Compact



BVT-OT2
Lid 2 smooth design



BVT-OT2-F
Lid 2 with membrane keypad area
The lid is provided with a 1.5 mm recessed membrane keypad area.



Lid 2 smooth design

Order designation

Model	Order no.		L	W	H	Designation
	light grey	pure white				
BVT-OT2	40002130	40102130	120	80	18	Bovista Compact lid 2

Scope of delivery:

1 lid

Note:

The lid is fitted with fixing domes for PCBs.

Lid 2 with membrane keypad area

Order designation

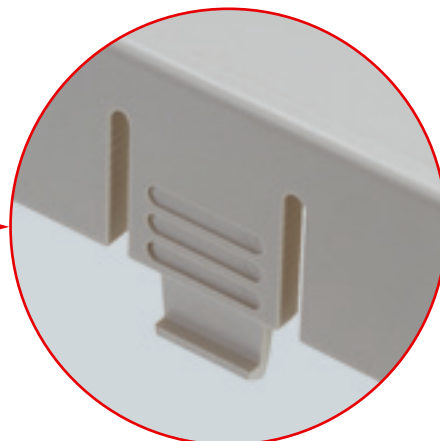
Model	Order no.		L	W	H	Designation
	light grey	pure white				
BVT-OT2-F	40002140	40102140	120	80	18	Bovista Compact lid 2 with membrane keypad area

Scope of delivery:

1 lid

Note:

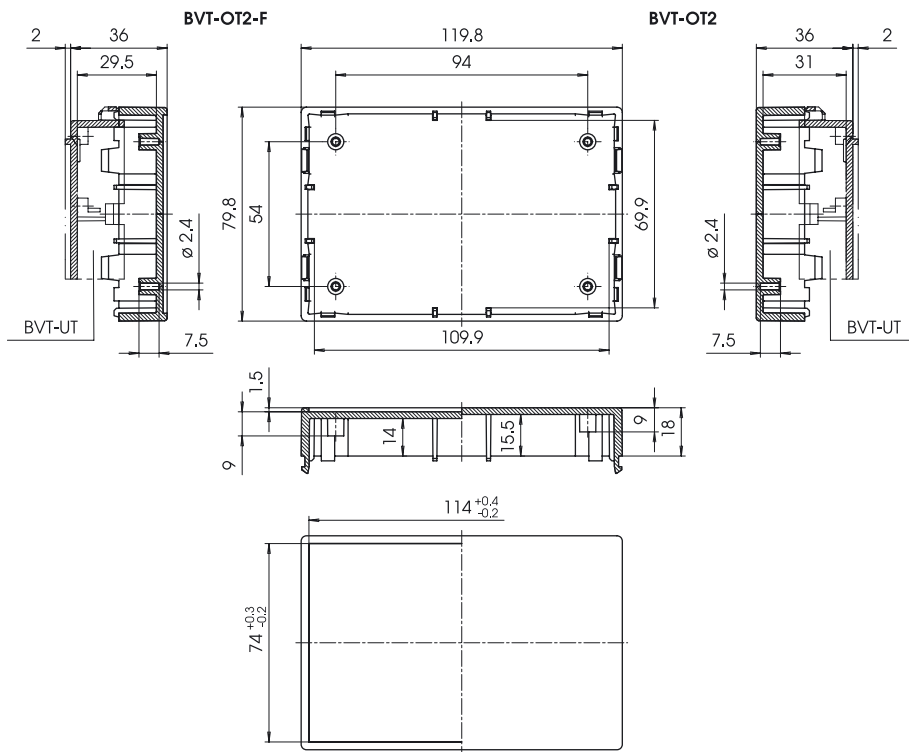
The lid is fitted with fixing domes for PCBs.



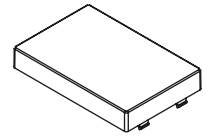
All Bovista lids are fitted as standard with latching hooks which ensure that the enclosure can only be opened by using a tool.

The adjacent photo shows a processed lid; the milling makes it possible to open the enclosure easily and by hand, for example for servicing, replacing installations or batteries, etc..

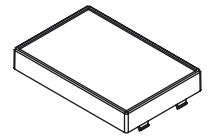
We will be pleased to carry out this processing work for you.



BVT-OT2 / BVT-OT2-F



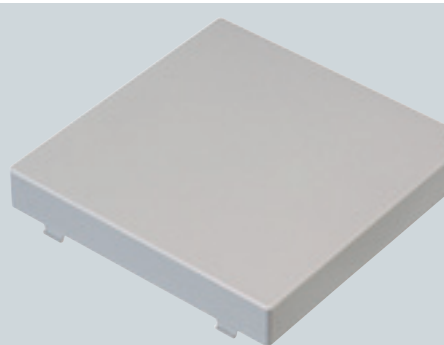
BVT-OT2



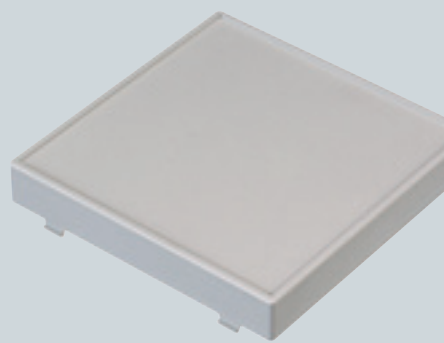
BVT-OT2-F

Z-2802170

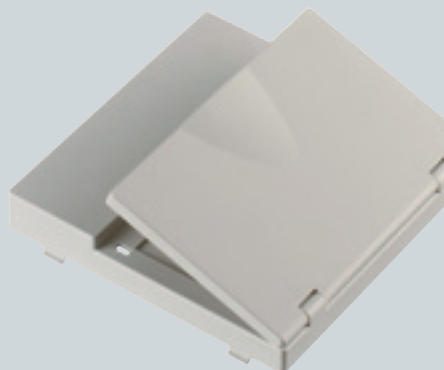
Bovista Compact



BVT-OT3
Lid 3 smooth design



BVT-OT3-F
Lid 3 with membrane keypad area
The lid is provided with a 1.5 mm recessed membrane keypad area.



BVT-OT3-SK
Lid 3 with secondary flap
A 1.5 mm recessed membrane keypad area is provided behind the secondary flap of the lid.

Lid 3 smooth design

Order designation

Model	Order no.		L	W	H	Designation
	light grey	pure white				
BVT-OT3	40002150	40102150	120	120	18	Bovista Compact lid 3

Scope of delivery:

1 lid

Note:

The lid is fitted with fixing domes for PCBs.

Lid 3 with membrane keypad area

Order designation

Model	Order no.		L	W	H	Designation
	light grey	pure white				
BVT-OT3-F	40002160	40102160	120	120	18	Bovista Compact lid 3 with membrane keypad area

Scope of delivery:

1 lid

Note:

The lid is fitted with fixing domes for PCBs.

Lid 3 with secondary flap

Order designation

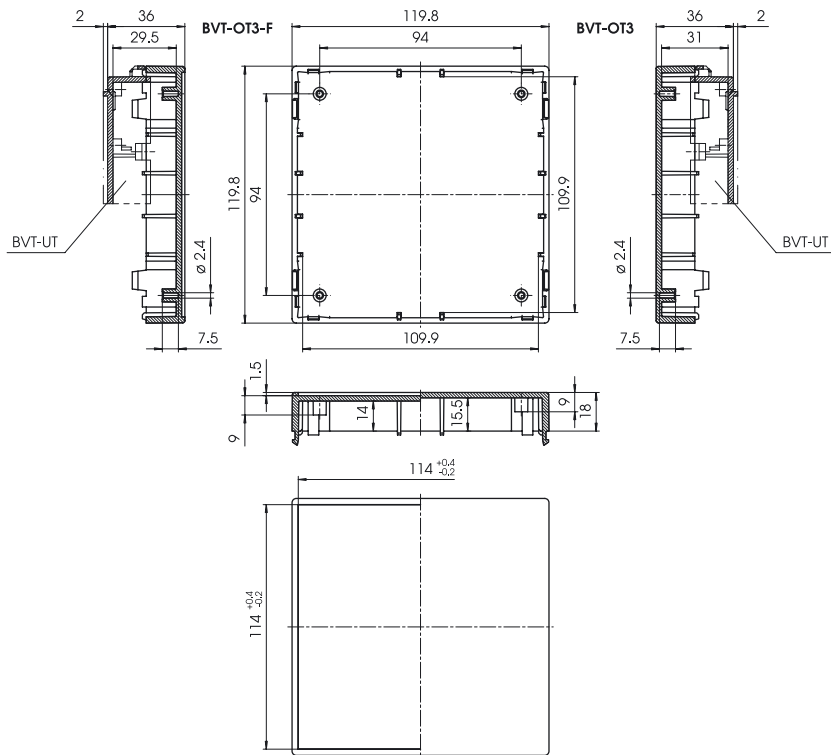
Model	Order no.		L	W	H	Designation
	light grey	pure white				
BVT-OT3-SK	40002170	40102170	120	120	18	Bovista Compact lid 3 with secondary flap

Scope of delivery:

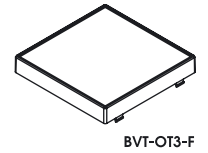
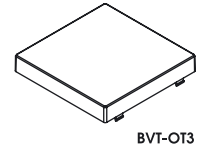
1 lid, complete

Note:

The lid is fitted with fixing domes for PCBs.

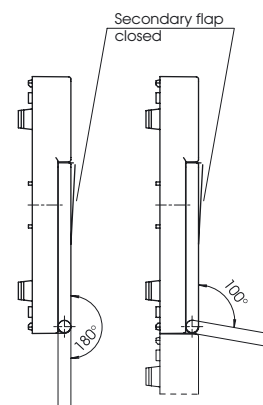
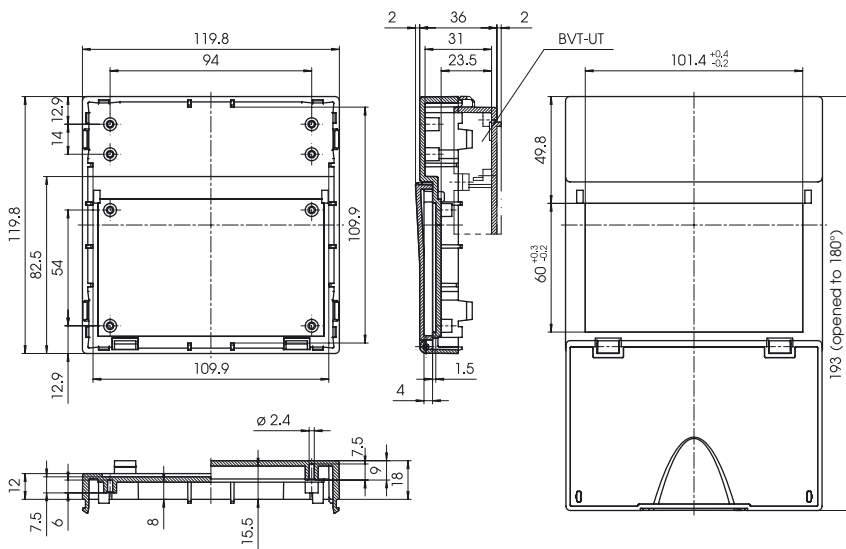


BVT-OT3 / BVT-OT3-F



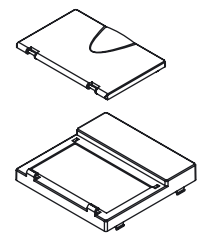
Z-2802171

BVT-OT3-SK



Max. opening angle of the secondary flap

Max. opening angle of the secondary flap when another lid is fitted under the hinge



Z-2802172



Bovista Compact accessories



BVT-MB module bridges

Module bridges are inserted into the bases and held in position when the lids are snapped on. Alternatively the module bridges can be fixed by means of the screws included in the scope of delivery.

BVT-WB
Wall fixing



BVT-WB2
Wall fixing



The Bovista base is snapped onto the wall fixing plate (both horizontally and vertically).

The wall fixing can be placed over flush-mounted branch boxes. The two openings permit connection of the unit to the domestic electronic system.

Module bridges for BVT-UT (-L)

Order designation

Model	Order no.	L	W	H	Designation
BVT-MB	40003000	114	12	11.5	Bovista Compact module bridges

Scope of delivery:

10 module bridges,
20 fixing screws

Note:

Module bridges must be used when the lids are turned 90° before being placed on the longitudinal sides of the bases.

For asymmetrical transverse installation (lid snaps onto the short side of the base), **one** module bridge is required; for centred transverse installation of the lids, **two** module bridges are required (see adjacent drawing).

Wall fixing for BVT-UT (-L)

Order designation

Model	agate grey		pure white		L	W	H	Designation
	Order no.	Order no.	Order no.	Order no.				
BVT-WB	40004000	40104000	188	108	6			Bovista Compact wall fixing

Scope of delivery:

1 wall fixing plate

Wall fixing 2 for BVT-UT2 (-L)

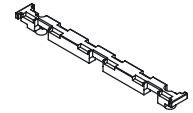
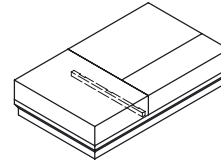
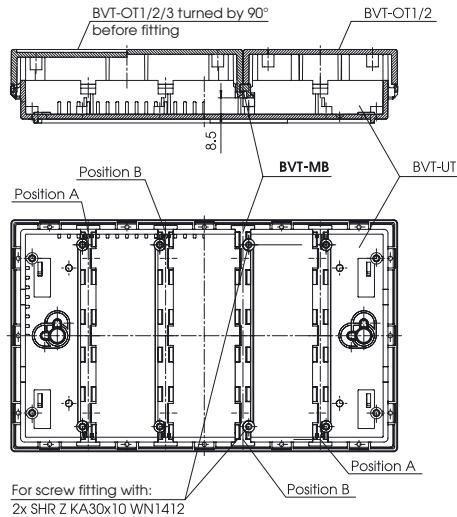
Order designation

Model	agate grey		pure white		L	W	H	Designation
	Order no.	Order no.	Order no.	Order no.				
BVT-WB2	40004200	40104200	108	68	6			Bovista Compact wall fixing 2

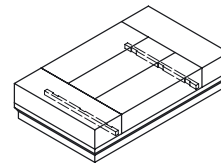
Scope of delivery:

1 wall fixing plate

BVT-MB



BVT-OT... transverse installation (asymmetrical) with one BVT-MB on position B

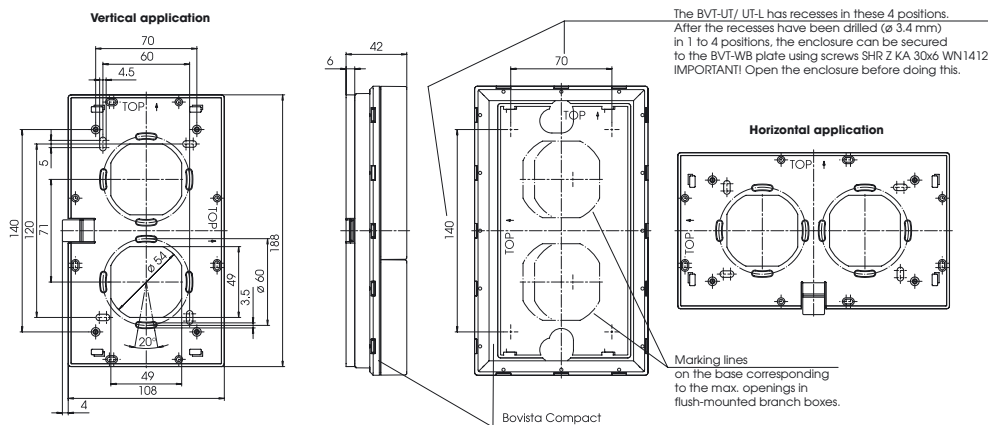


BVT-OT... transverse installation (centred) with one BVT-MB on position A

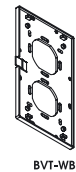
BVT-MB

Z-2802173

BVT-WB



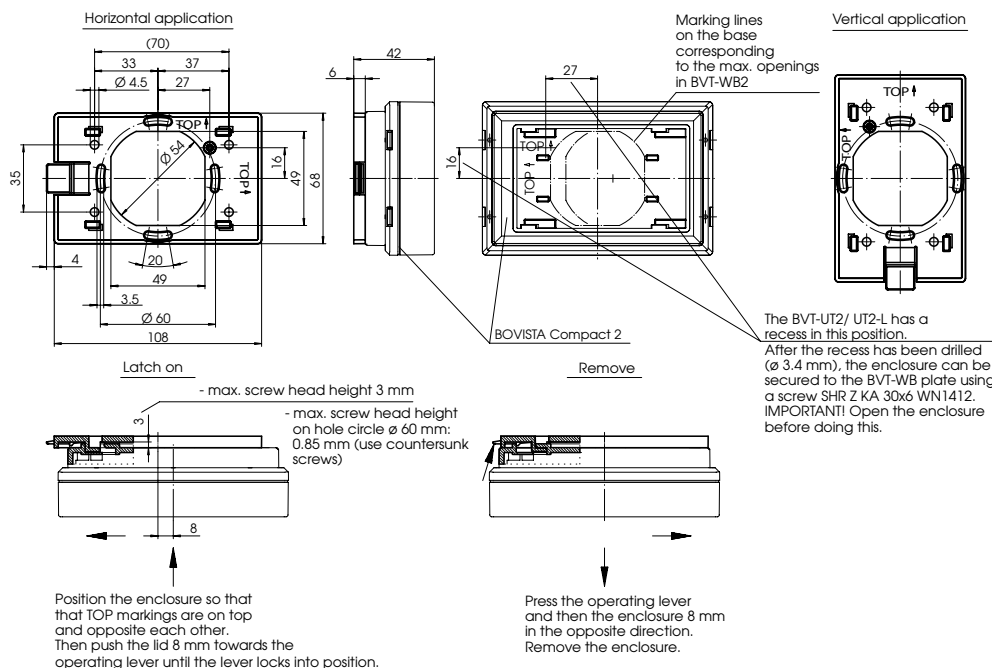
Marking lines on the base corresponding to the max. openings in flush-mounted branch boxes.



BVT-WB

Z-2802174

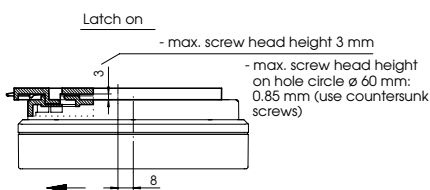
BVT-WB 2



Marking lines on the base corresponding to the max. openings in BVT-WB2

Vertical application

The BVT-UT2/ UT2-L has a recess in this position. After the recess has been drilled (ø 3.4 mm), the enclosure can be secured to the BVT-WB plate using a screw SHR Z KA 30x6 WN1412. IMPORTANT! Open the enclosure before doing this.



Position the enclosure so that that TOP markings are on top and opposite each other. Then push the lid 8 mm towards the operating lever until the lever locks into position.

Press the operating lever and then the enclosure 8 mm in the opposite direction. Remove the enclosure.

Z-2802239

Bovista Compact accessories



BVT-UP(2) Flush-mounted enclosure

When combined with the front frame, the Bovista flush-mounted enclosures permit fitting directly to the wall. Both horizontal and vertical fitting are possible.

The front frame is available in pure white, similar to RAL 9010 and – on request – in light-grey, similar to RAL 7035.

Flush-mounted enclosure and front frames

Order designation

Model	Order no.	L	W	H	Designation
BVT-UP	40200000	238	158	30.75	Bovista Compact flush-mount. incl.
BVT-FO-9010	40200300	257	177	-	Bovista Compact front frame, pure white, similar to RAL 9010
BVT-FO-7035*	40200200	257	177	-	Bovista Compact front frame, light grey, similar to RAL 7035

* available on request

Enclosure material:

Flush-mounted enclosure:
steel panel, galvanised 0.75 mm;
front frame:
steel panel, powder-coated 1.25 mm

Colour of front frame:

BVT-FO-9010,
pure white, similar to RAL 9010

BVT-FO-7035,
light grey, similar to RAL 7035
(available on request)

Example of application:



Flush-mounted enclosure 2 and front frames

Order designation

Model	Order no.	L	W	H	Designation
BVT-UP2	40200010	158	118	30.75	Bovista Compact 2 flush-mount. incl.
BVT-FO2-9010	40200310	177	137	-	Bovista Compact 2 front frame, pure white, similar to RAL 9010
BVT-FO2-7035*	-	177	137	-	Bovista Compact 2 front frame, light grey, similar to RAL 7035

* available on request

Enclosure material:

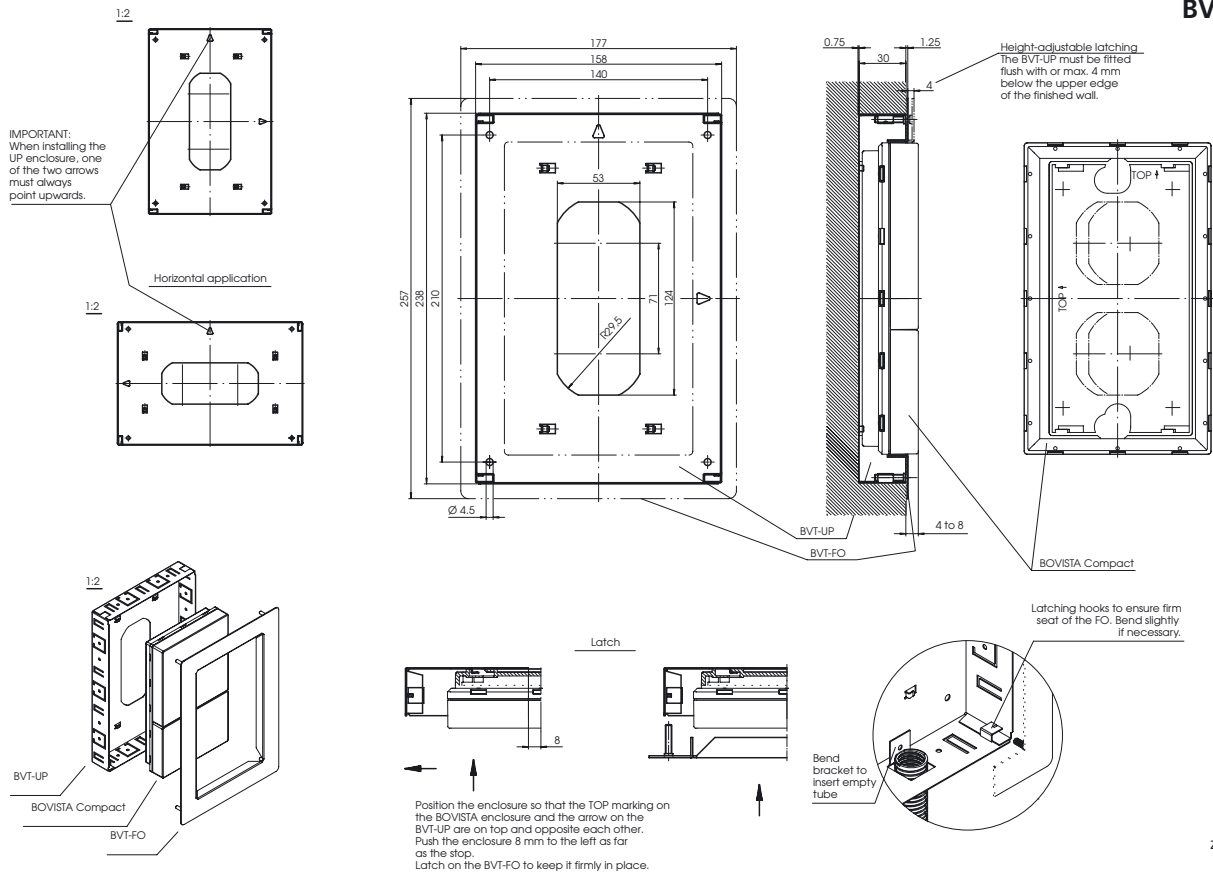
Flush-mounted enclosure:
steel panel, galvanised 0.75 mm;
front frame:
steel panel, powder-coated 1.25 mm

Colour of front frame:

BVT-FO-9010,
pure white, similar to RAL 9010

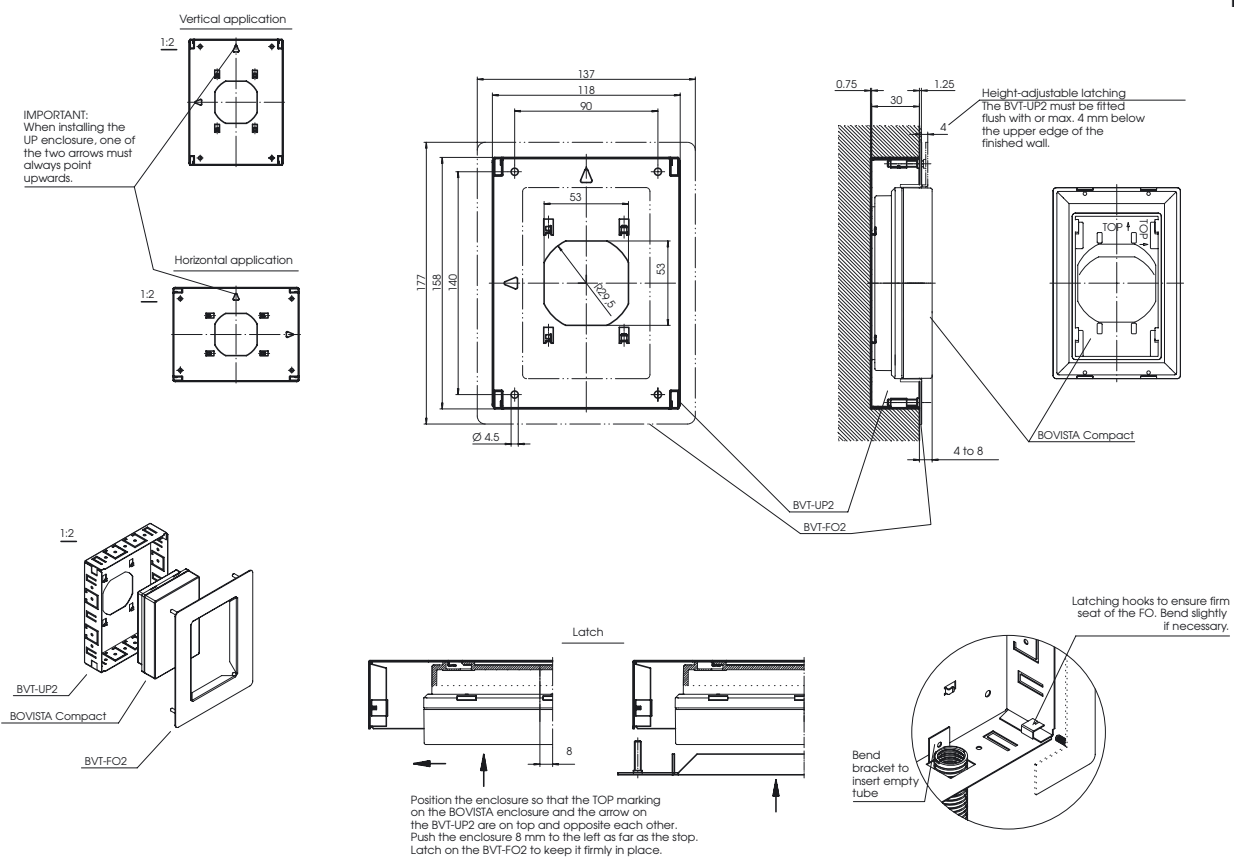
BVT-FO-7035,
light grey, similar to RAL 7035
(available on request)

BVT-UP

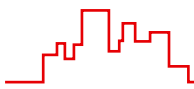


Z-2802319

BVT-UP2



Z-2802369



Bovista Control



BVL-UT(-L) Base
with and without ventilation

Both bases are suitable for horizontal and vertical use.

The enclosure can be fixed to the wall by means of the integrated keyholes or the snap-on wall-fixing BVL-WB which is available as an accessory (see pages 56-57).

The base is fitted with grooves for bulkhead walls which separate terminal sections from each other if necessary.

In addition, Bovista Control bases have fixing domes to accept PCBs.

Base with and without ventilation

Order designation

Model	agate grey		pure white		L	W	H	Designation
	Order no.	Order no.	Order no.	Order no.				
BVL-UT	40011000	40111000	40111000	40111000	270	162	28	Bovista Control base
BVL-UT-L	40011100	40111100	40111100	40111100	270	162	28	Bovista Control base with ventilation

Scope of delivery:

1 base

Note:

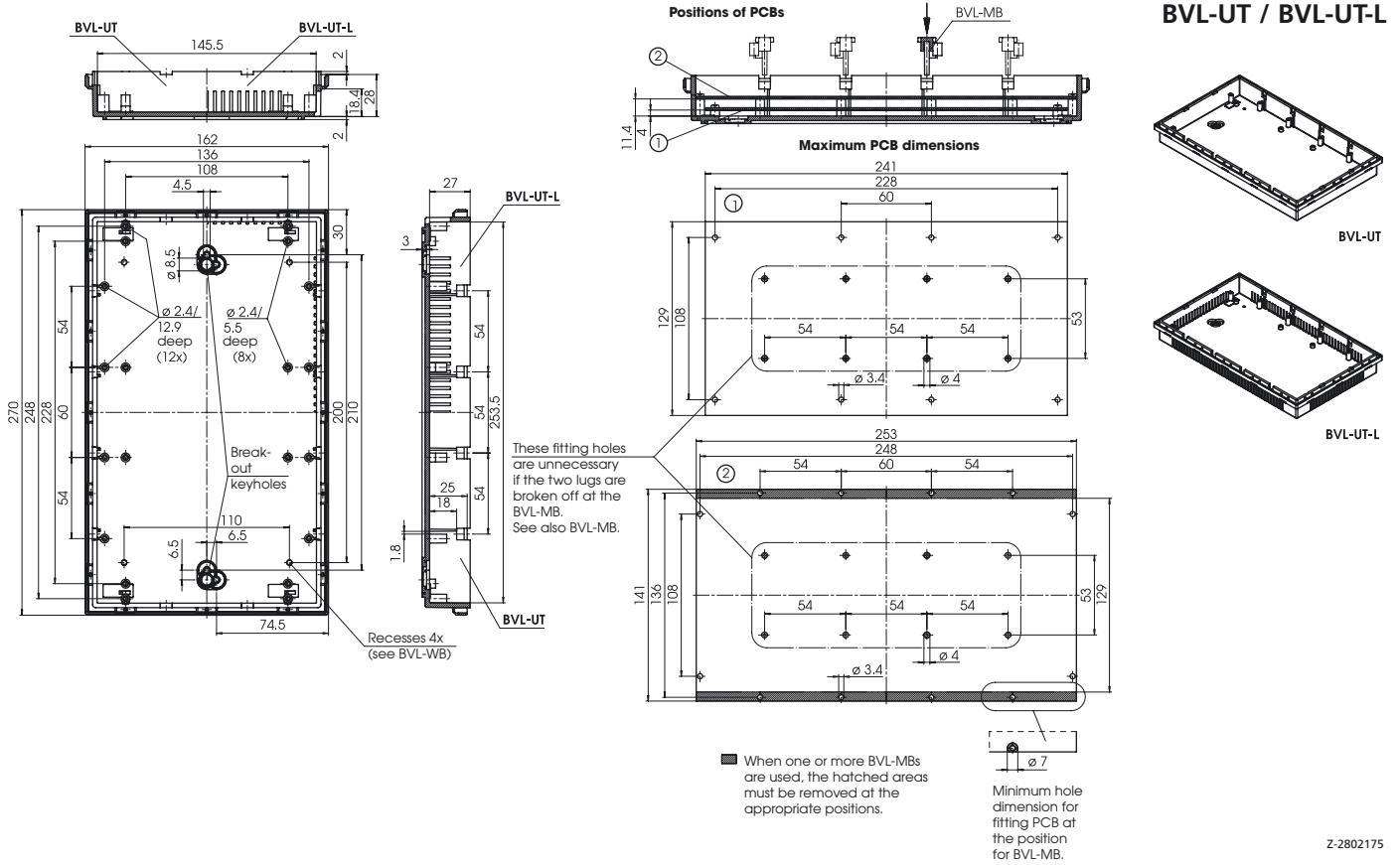
All Bovista lids can be snapped directly onto the longitudinal sides of the bases. If a lid is turned 90° before being placed on the base, module bridges BVL-MB (pages 56-57) need to be fitted so that the lids can be snapped on and stabilised.

If module bridges are used, PCBs must be processed according to the adjacent drawings.

Caps EG-AK, which are used to cover the keyholes after fixing to the wall, can be ordered separately.

Order no. 33000100, PU = 2 pcs

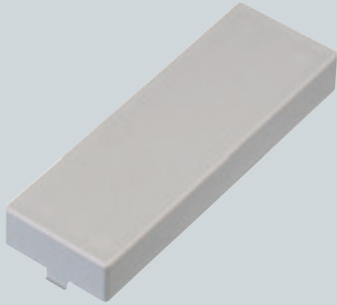
Colour: agate grey, similar to RAL 7038



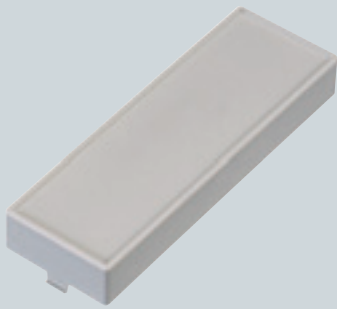
Z-2802175



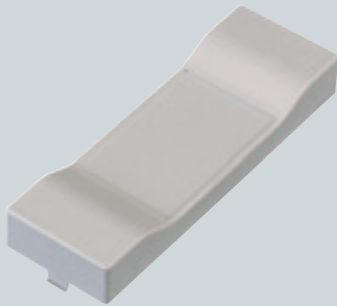
Bovista Control



BVL-OT1
Lid 1 smooth design



BVL-OT1-F
Lid 1 with membrane keypad area
The lid is provided with a 1.5 mm recessed membrane keypad area.



BVL-OT1-D
Lid 1 with design front
The lid is provided with a 0.7 mm recessed membrane keypad area.

Lid 1 smooth design

Order designation

Model	Order no.		L	W	H	Designation
	light grey	pure white				
BVL-OT1	40012100	40112100	162	54	22	Bovista Control lid 1

Scope of delivery:
1 lid

Note:
The lid is fitted with fixing domes for PCBs.

Lid 1 with membrane keypad area

Order designation

Model	Order no.		L	W	H	Designation
	light grey	pure white				
BVL-OT1-F	40012110	40112110	162	54	22	Bovista Control lid 1 with membrane keypad area

Scope of delivery:
1 lid

Note:
The lid is fitted with fixing domes for PCBs.

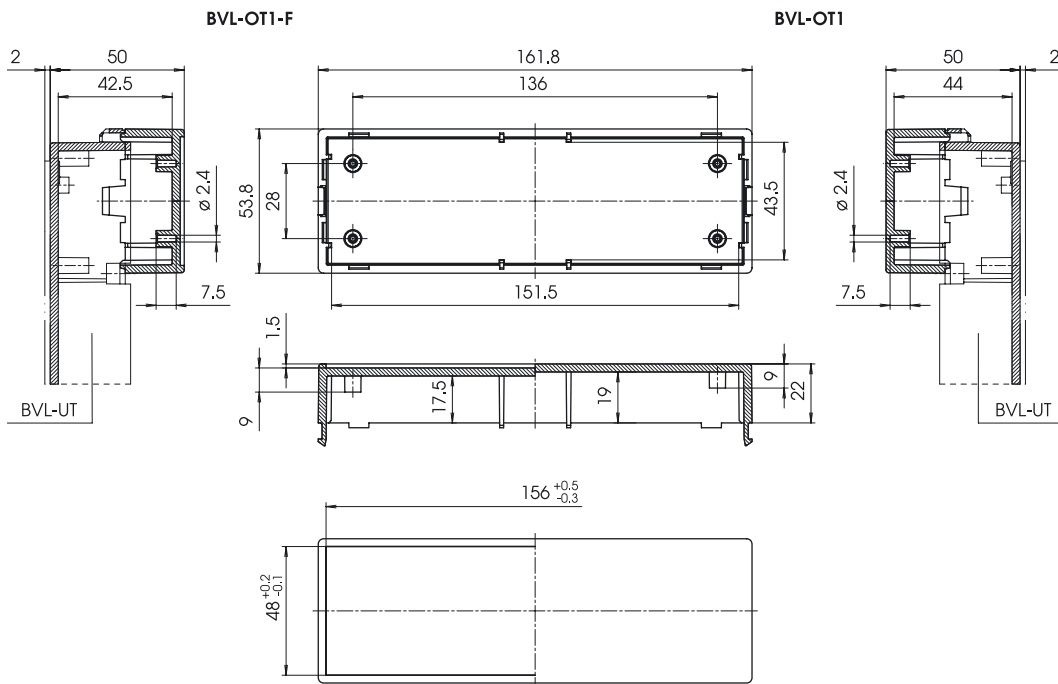
Lid 1 with design front

Order designation

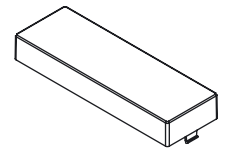
Model	Order no.		L	W	H	Designation
	light grey	pure white				
BVL-OT1-D	40012120	40112120	162	54	22	Bovista Control lid 1 with design front

Scope of delivery:
1 lid

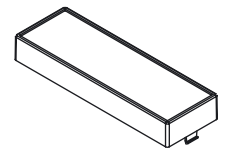
Note:
The lid is fitted with fixing domes for PCBs.



BVL-OT1 / BVL-OT1-F

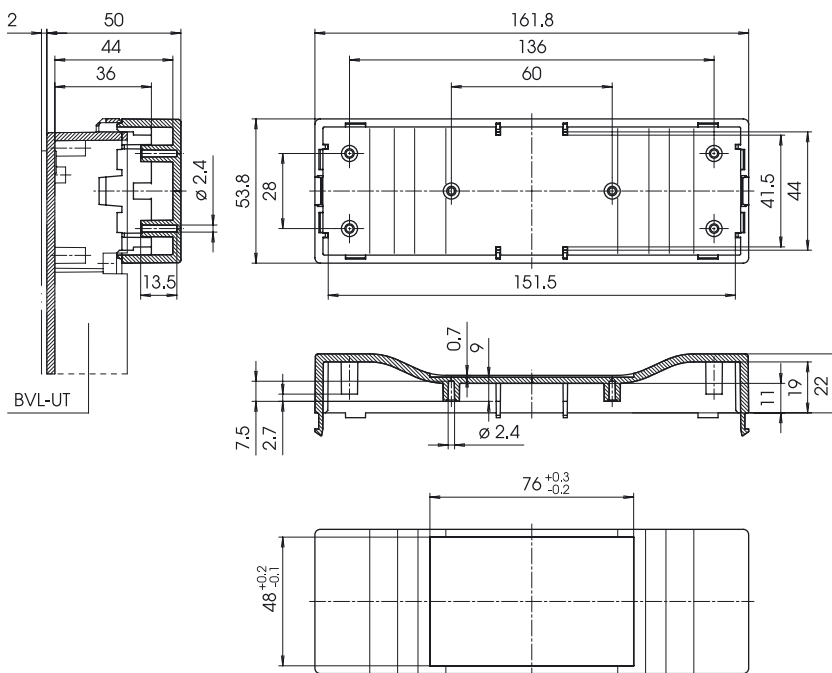


BVL-OT1

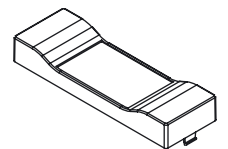


BVL-OT1-F

Z-2802176

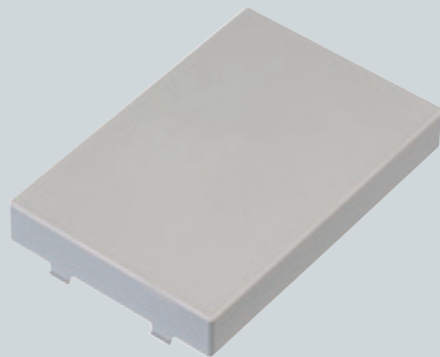


BVL-OT1-D

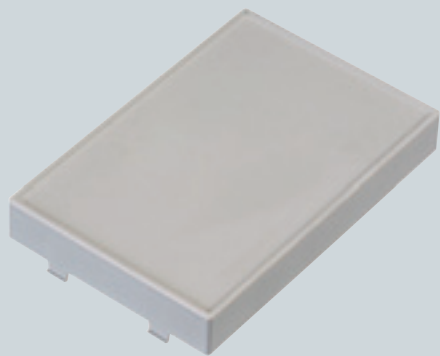


Z-2802177

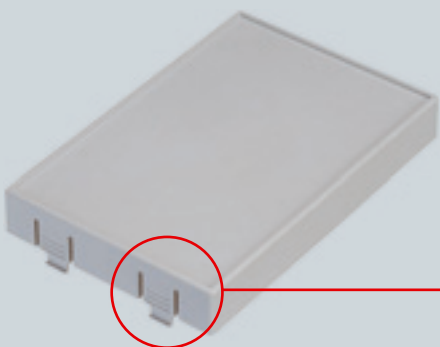
Bovista Control



BVL-OT2
Lid 2 smooth design



BVL-OT2-F
Lid 2 with membrane keypad area
The lid is provided with a 1.5 mm recessed membrane keypad area.



Lid 2 smooth design

Order designation

Model	Order no.		L	W	H	Designation
	light grey	pure white				
BVL-OT2	40012130	40112130	162	108	22	Bovista Control lid 2

Scope of delivery:

1 lid

Note:

The lid is fitted with fixing domes for PCBs.

Lid 2 with membrane keypad area

Order designation

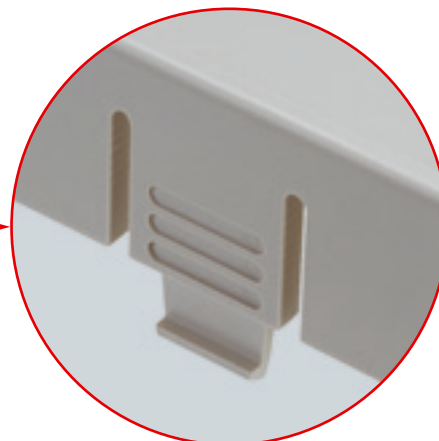
Model	Order no.		L	W	H	Designation
	light grey	pure white				
BVL-OT2-F	40012140	40112140	162	108	22	Bovista Control lid 2 with membrane keypad area

Scope of delivery:

1 lid

Note:

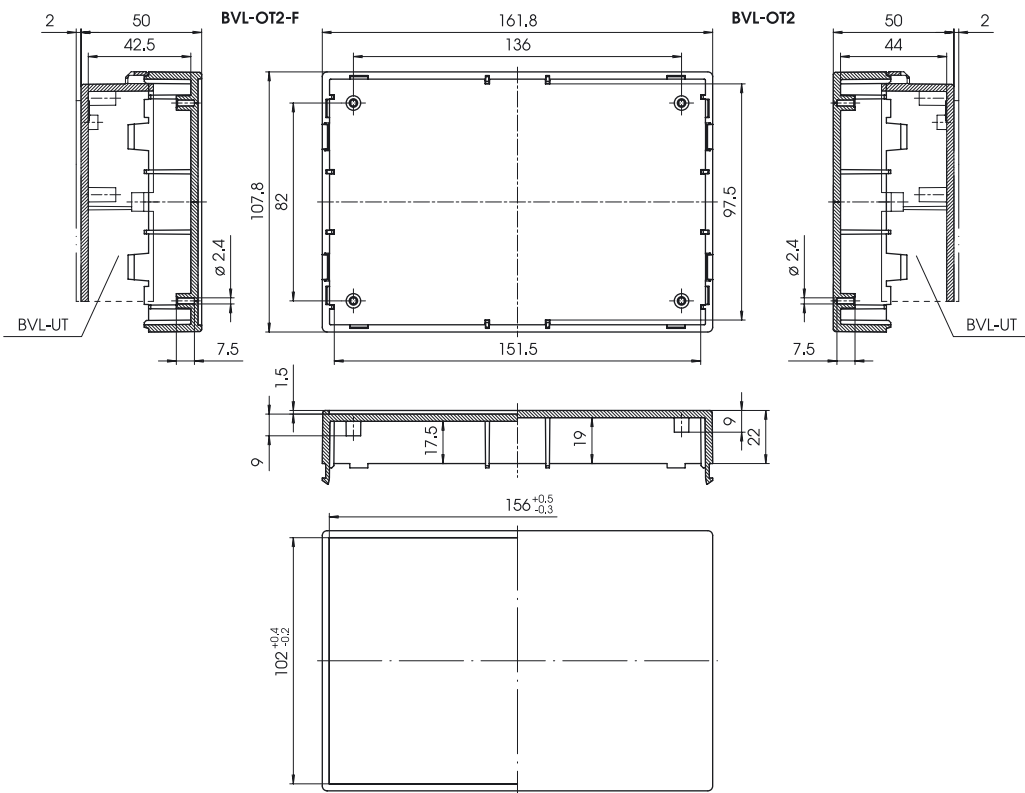
The lid is fitted with fixing domes for PCBs.



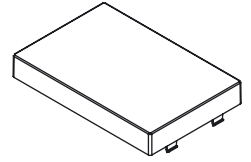
All Bovista lids are fitted as standard with latching hooks which ensure that the enclosure can only be opened by using a tool.

The adjacent photo shows a processed lid; the milling makes it possible to open the enclosure easily and by hand, for example for servicing, replacing installations or batteries, etc..

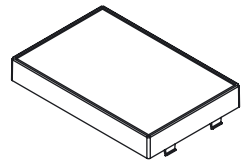
We will be pleased to carry out this processing work for you.



BVL-OT2 / BVL-OT2-F



BVL-OT2

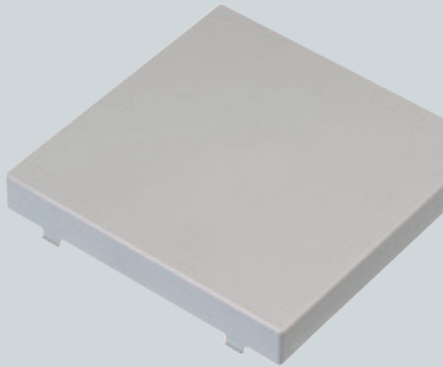


BVL-OT2-F

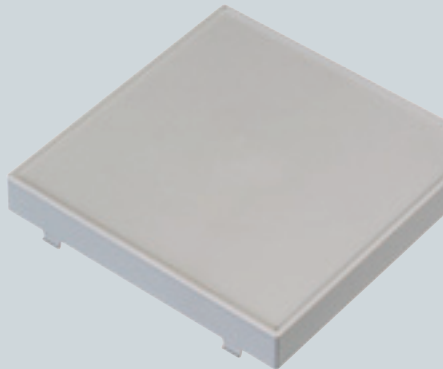
Z-2802178



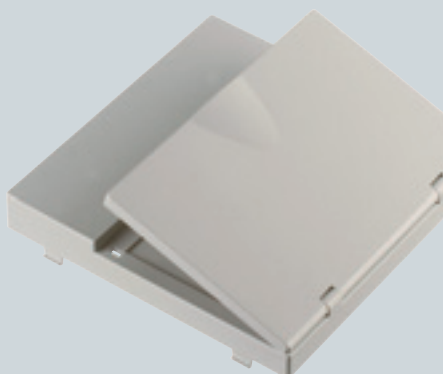
Bovista Control



BVL-OT3
Lid 3 smooth design



BVL-OT3-F
Lid 3 with membrane keypad area
The lid is provided with a 1.5 mm recessed membrane keypad area.



BVL-OT3-SK
Lid 3 with secondary flap
A 1.5 mm recessed membrane keypad area is provided behind the secondary flap of the lid.

Lid 3 smooth design

Order designation

Model	light grey		pure white			Designation
	Order no.	Order no.	L	W	H	
BVL-OT3	40012150	40112150	162	162	22	Bovista Control lid 3

Scope of delivery:

1 lid

Note:

The lid is fitted with fixing domes for PCBs.

Lid 3 with membrane keypad area

Order designation

Model	light grey		pure white			Designation
	Order no.	Order no.	L	W	H	
BVL-OT3-F	40012160	40112160	162	162	22	Bovista Control lid 3 with membrane keypad area

Scope of delivery:

1 lid

Note:

The lid is fitted with fixing domes for PCBs.

Lid 3 with secondary flap

Order designation

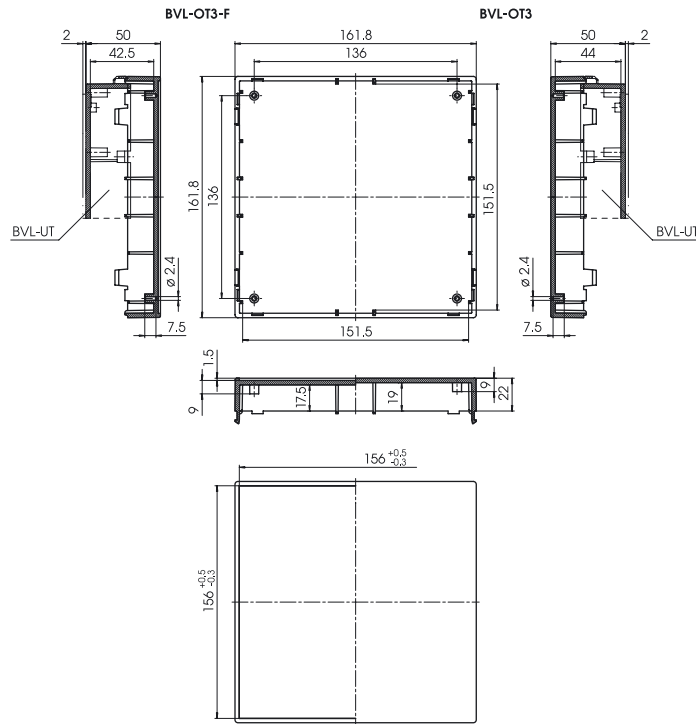
Model	light grey		pure white			Designation
	Order no.	Order no.	L	W	H	
BVL-OT3-SK	40012170	40112170	162	162	22	Bovista Control lid 3 with secondary flap

Scope of delivery:

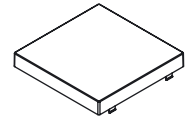
1 lid, complete

Note:

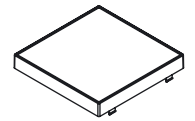
The lid is fitted with fixing domes for PCBs.



BVL-OT3 / BVL-OT3-F

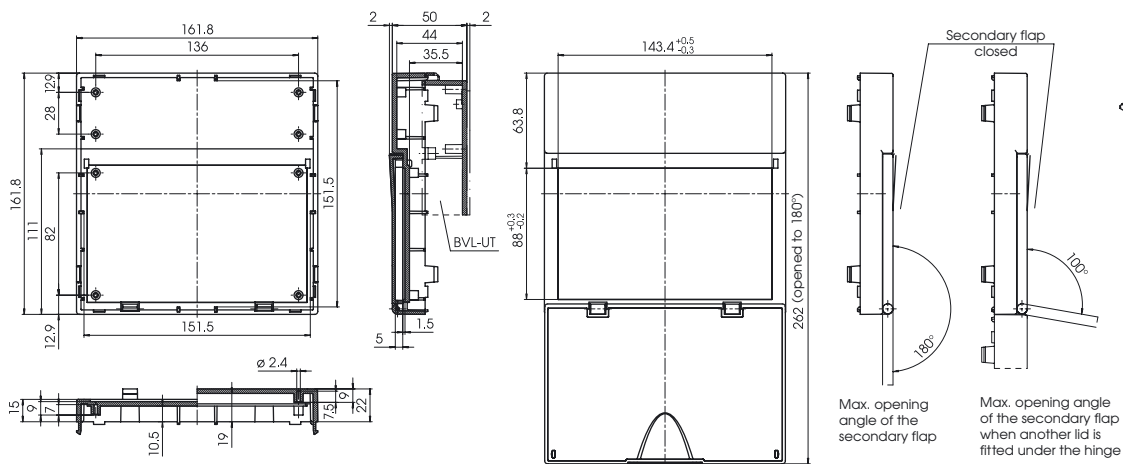


BVL-OT3

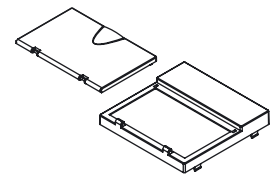


BVL-OT3-F

Z-2802179



BVL-OT3-SK



Max. opening angle of the secondary flap

Max. opening angle of the secondary flap when another lid is fitted under the hinge

Z-2802180



Bovista Control accessories



BVL-MB Module bridges

Module bridges are inserted into the bases and held in position when the lids are snapped on. Alternatively the module bridges can be fixed by means of the screws included in the scope of delivery.

Module bridges for BVL-UT(-L)

Order designation

Model	Order no.	L	W	H	Designation
BVL-MB	40013000	156	16	25	Bovista Control module bridges

Scope of delivery:

10 module bridges,
20 fixing screws

Note:

Module bridges must be used when the lids are turned 90° before being placed on the longitudinal sides of the bases.

For asymmetrical transverse installation (lid snaps onto the short side of the base), **one** module bridge is required;

for centred transverse installation of the lids, **two** module bridges are required (see adjacent drawing). Using **one** module bridge BVL-MB and distance bolts creates an additional level of PCBs (see adjacent drawing).



DIBLZ AK 30 x 5/IM3/10
Distance bolts

Distance bolts

Order designation

Model	Order no.	Boss internal ø	L	I1	I2
DIBLZ AK 30 x 5/IM3/10	59006986	2.4 - 2.6	10	5	7

Scope of delivery: 1 distance bolt

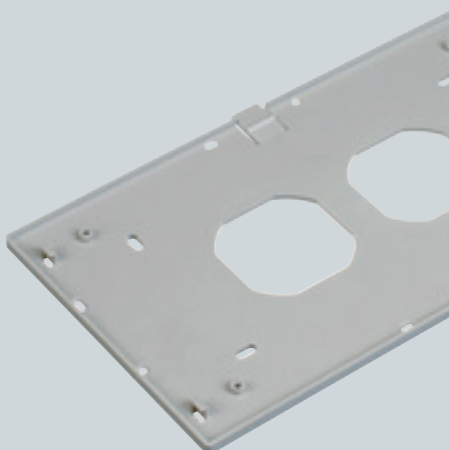
Wall fixing for BVL-UT(-L)

Order designation

Model	agate grey pure white		L	W	H	Designation
	Order no.	Order no.				
BVL-WB	40014000	40114000	258	150	6	Bovista Control wall fixing

Scope of delivery:

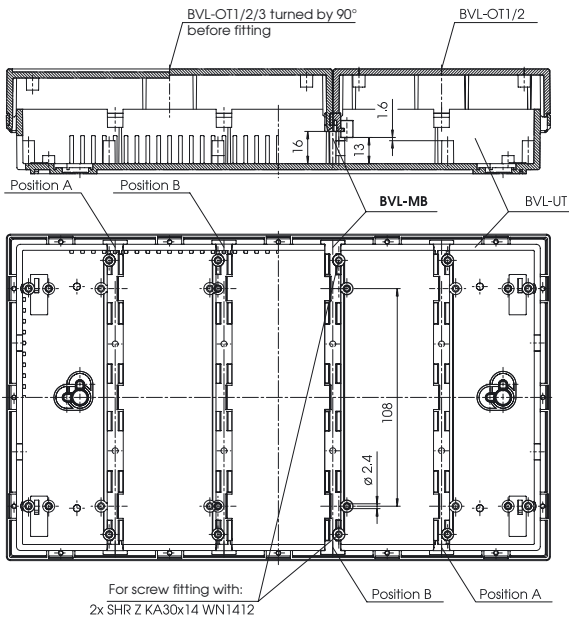
1 wall fixing plate



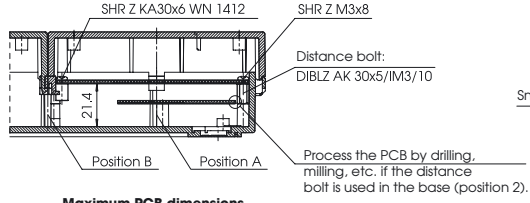
BVL-WB Wall fixing

The Bovista base is snapped onto the wall fixing plate (both horizontally and vertically).

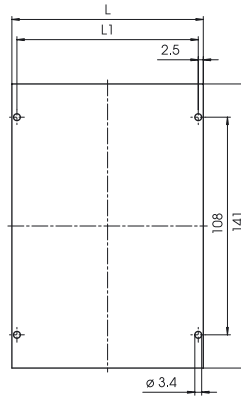
The wall fixing can be placed over flush-mounted branch boxes. The two openings permit connection of the unit to the domestic electronic system.



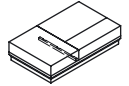
Additional PCB position if a BVL-MB and distance bolts are used



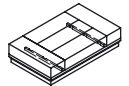
Maximum PCB dimensions



BVL-MB



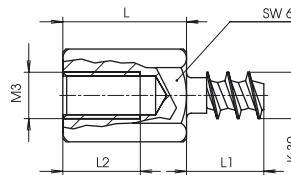
BVL-OT... transverse installation (asymmetrical) with one BVL-MB on position B



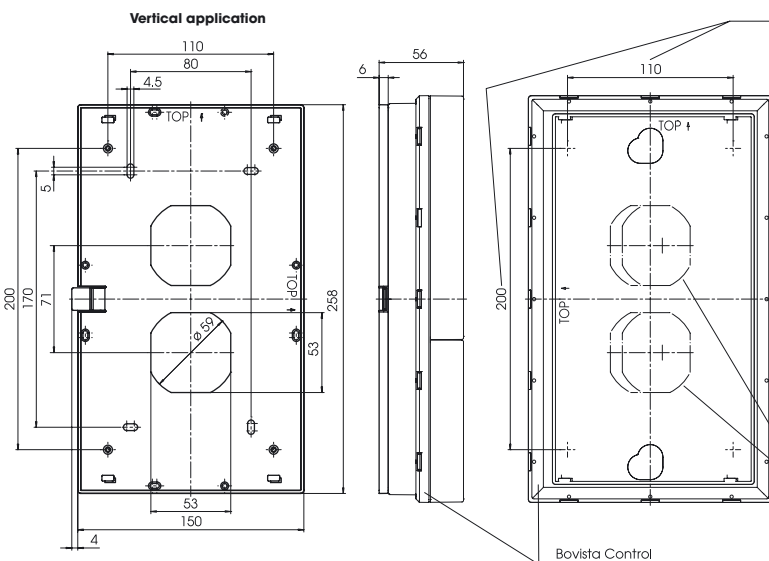
BVL-OT... transverse installation (centred) with one BVL-MB on position A

Z-2802181

DIBLZ AK 30 x 5/IM3/10

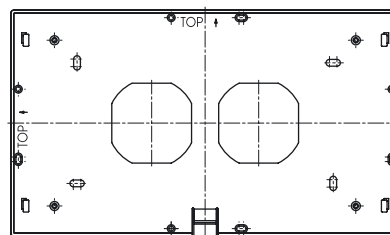


Z-2001158



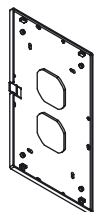
The BVL-UT/ UT-L has recesses in these 4 positions. After the recesses have been drilled ($\varnothing 3.4$ mm) in 1 to 4 positions, the enclosure can be secured to the BVL-WB plate using screws SHR Z KA 30x6 WN1412. **IMPORTANT!** Open the enclosure before doing this.

Horizontal application

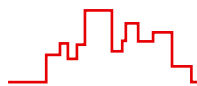


Marking lines on the base corresponding to the max. openings in in flush-mounted branch boxes.

BVL-WB



Z-2802182



Bovista Control accessories



BVL-UP Flush-mounted enclosure

When combined with the front frame, the Bovista flush-mounted enclosures permit fitting directly to the wall. Both horizontal and vertical fitting are possible.

The front frame is available in pure white, similar to RAL 9010 and – on request – in light grey, similar to RAL 7035.

Flush-mounted enclosure and front frames

Order designation

Model	Order no.	L	W	H	Designation
BVL-UP	40300000	323	215	42.75	Bovista Control flush-mount. encl.
BVL-FO-9010	40300300	342	234	-	Bovista Control front frame, pure white, similar to RAL 9010
BVL-FO-7035*	40300200	342	234	-	Bovista Control front frame, light grey, similar to RAL 7035

* available on request

Enclosure material:

Flush-mounted enclosure:
steel panel, galvanised 0.75 mm;
front frame:
steel panel, powder-coated 1.25 mm

Colour of front frame:

BVL-FO-9010,
pure white, similar to RAL 9010

BVL-FO-7035,
light grey, similar to RAL 7035
(available on request)

Example of application:



