

GTS-AB Series

Diameter Ø38mm Solid shaft Ø 6mm AB phases type

■ Features

- Miniature size, easy assembling, low cost
- 2 quadrature output channel (A&B)
- Low cost and high performance
- Resolution 100, 200, 300, 360, 400, 600 PPR



■ Specification

Brand		GTEACH
Item		Diameter 38mm shaft 6mm type incremental rotary encoder
Resolution(P/R)		100 200 300 360 400 600
Output Phase		AB Phase
Output Type		NPN Open Collector, Voltage, Push-pull
Electrical	Supply Voltage	5-24VDC
	Current consumption	Max. 40mA
	Response frequency	Max. 20Khz
	Allowable revolution	Max. 2000 rev/min
Mechanical	Starting torque	Max. 20gf.cm (0.002N.m)
	Rotor inertia	Max. 35g.cm ² (3.5*10 ⁻⁶ kg.m ²)
	Shaft loading	Radial: Max. 2kgf Thrust: Max. 1kgf
	Mechanical Speed	Max. 5000 rev/min (*1)
Environmental	Ambient temperature	-10~70 (at non-freezing status), Storage: -25~85
	Ambient humidity	35~85%RH, Storage: 35~90%RH
	Protection	IP52 (IEC standard)
	Vibration	1.5mm amplitude at frequency of 10-55 Hz in each of X,Y, Z direction for 2 hours.
	Shock	Max. 50G
Unit weight		Approx.: 160g
Cable		2.0m (The cable length can be customized)
Connection		Cable outgoing type
Insulation resistance		Min. 100MΩ (at 500VDC)
Approval		CE ROHS

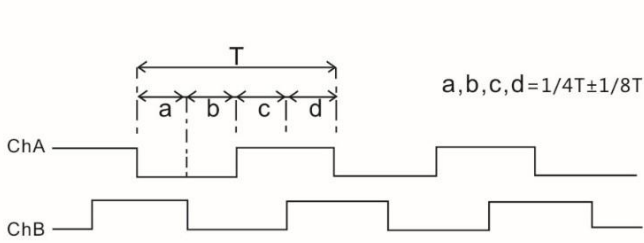
(*1) Mechanical speed > Allowable revolution, Please take allowable speed as standard when use

GTS-AB Series

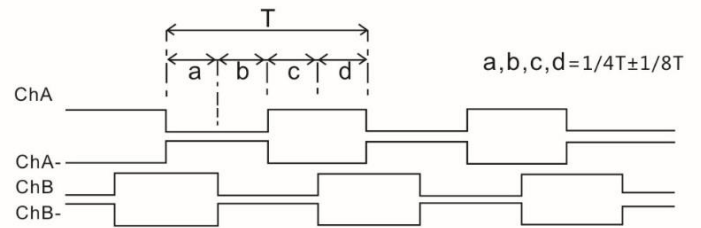
Ordering information

GTS-	06-	OC-	RA600A-	2M
Series	Shaft	Output type	RESOLUTION	Cable Length
GTS	06: 6mm	OC: NPN VE: Voltage OP: Push-Pull	100, 200, 300, 360, 400, 600	2M: 2 meters

Output Waveform



• Voltage type



• Line driver type

Dimension

