

## IC Socket Series

KLS1-216 IC SOCKET 2.54mm(0.100")

### Electrical Characteristics:

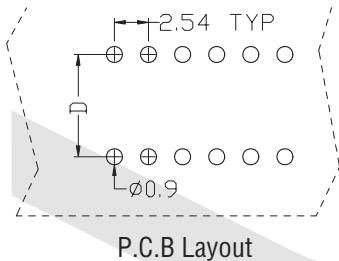
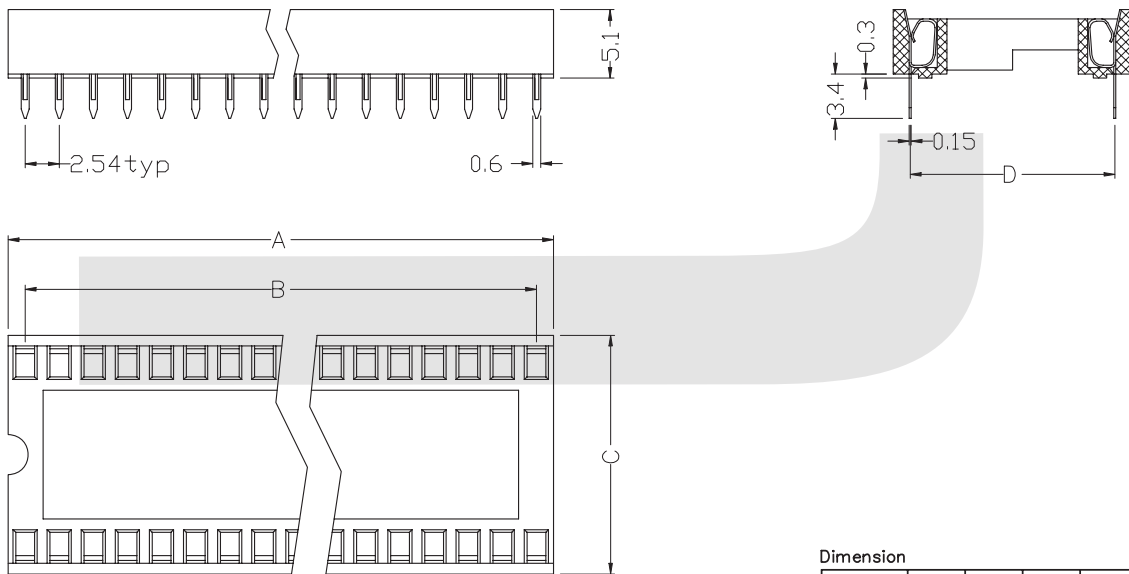
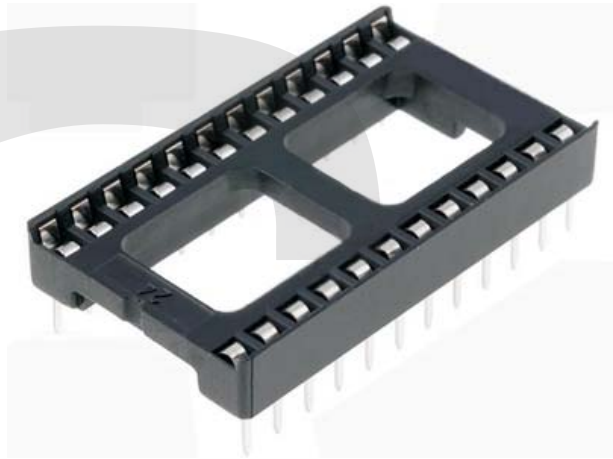
Current Rating: 1 AMP  
Insulator Resistance: 5000MΩmin. at DC 500V  
Contact Resistance: 20mΩmax. at DC 100mA  
Operating Temperature: -45°C~+105°C

### Material:

Housing: 30% Glass filled PBT UL94V-0  
Contacts: Phosphor Bronze  
Plating: Tin plated: 100u" over 50u" nickel

### Features:

\*IC Socket Strips - with screw machind pins



Dimension

position	A	B	C	D
08	10.16	7.62	10.16	7.62
14	17.78	15.24	10.16	7.62
16	20.32	17.78	10.16	7.62
18	22.86	20.32	10.16	7.62
20	25.40	22.86	10.16	7.62
24	30.48	27.94	10.16	7.62
24	30.48	27.94	17.78	15.24
28	35.56	33.02	10.16	7.62
28	35.56	33.02	17.78	15.24
32	40.54	38.10	17.78	15.24
40	50.80	48.26	17.78	15.24
42	53.21	50.80	17.78	15.24
48	60.80	58.42	17.78	15.24

## ORDER INFORMATION

Product No.: KLS1-216-XX-D

Pos. No. \_\_\_\_\_ D=15.24mm plastic space Without D=7.62mm plastic space  
IC Socket 2.54mm Series \_\_\_\_\_ Number of Contacts: XX=08~48Pin