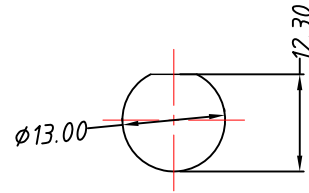
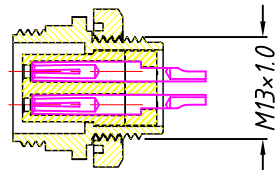
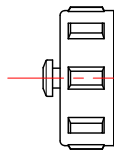
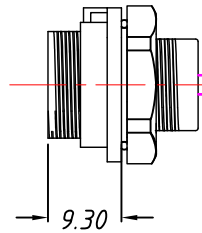
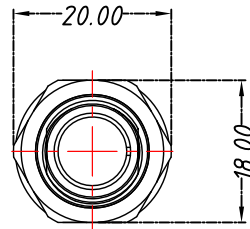
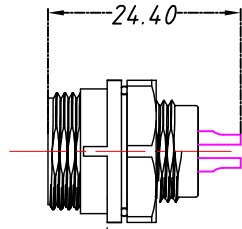
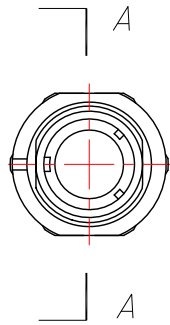


1 RoHS Compliance



SECTION A-A

PANEL CUT-OUT
Thickness 3.0mm Max

Material & SPEC.

- 1.Shell Material: PPO,PA66 UL94V-0
- 2.Insulation Materials: PPS, High Temperature 260°C
- 3.Contact: Brass,Gold-plated
- 4.Insulation resistance: 2000MΩ
- 5.Number of poles: 2~9 poles
- 6.Coupling: Threaded
- 7.Termination: Solder
- 8.Cable outer Diameter: Not- 4~6.5mm; G- 5~8mm
- 9.IP Rating: IP68
- 10.Durability: 500 mating cycles
- 11.Temperature Range: -25°C~+80°C

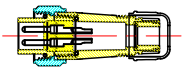
ORDER INFORMATION:

L - KLS15 - W13 A2 - XX

RoHS
IP68 Connector type
Female Socket for Panel Mount
Number of poles: 2~9 poles

Match Connector

KLS15-W13A1



Solder contact arrangement and spec

Number of contact	2	3	4	5	6	7	9
Male contact face view							
Rated current (A)	13A	13A	5A	5A	5A	5A	3A
Contact diameter	φ1.6x2	φ1.6x3	φ1.0x4	φ1.0x5	φ1.0x6	φ1.0x7	φ0.7x9
Rated voltage(AC.V)	250V	250V	200V	180V	125V	125V	125V
Test voltage(AC.V) 1min	1500V	1500V	1500V	1000V	1000V	1000V	1000V
Contact resistance mΩ	2	2	5	5	5	5	10
Wire size solder mm ² /AWG	≤2/14	≤2/14	≤0.785/18	≤0.785/18	≤0.785/18	≤0.785/18	≤0.785/18

GENERAL TOLERANCE		PROJECTION	Description:
.X ±0.05	UNITS	mm	W13 CONN, Solder, Female Socket for Panel Mount,IP68
.XX ±0.02	SHEET SIZE	A4	
		KLS P/N:	KLS15-W13A2-XX
Draw: Daniel	2018-08-27	NingBo KLS ELECTRONIC CO.,L TD.	
Check: Daniel	2018-08-27		
SCALE 1:1	SHEET		