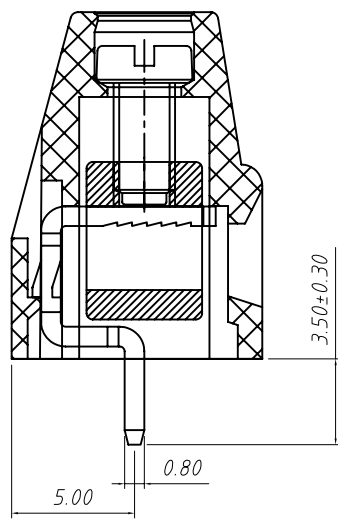


PCB LAYOUT



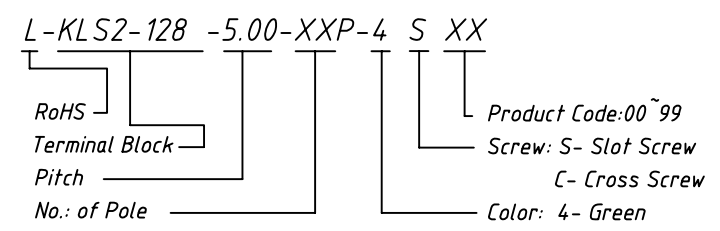
SECTION A-A

Material
 Screw: M2.5, Steel, Zn plated
 Cage: Brass, Nickel plated
 Pin header: Brass, Tin plated
 Housing: PA66, UL94V-0

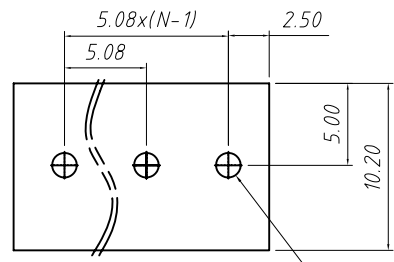
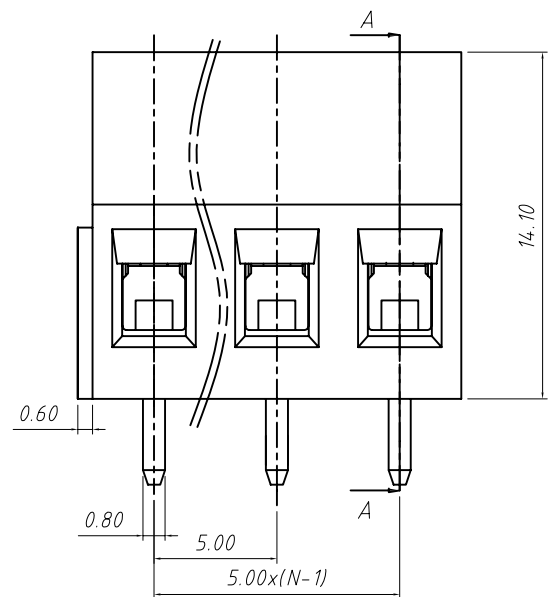
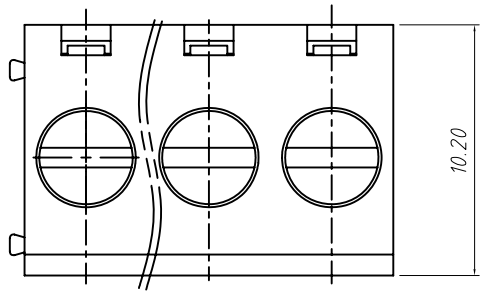
Electrical
 Rated voltage: 300V
 Rated current: 16A
 Wire range: 22~12AWG 2.5mm²
 Contact Resistance: 20 mΩ
 Insulation resistance: 500MΩ/DC500V
 Withstand voltage: AC2000V / 1 min

Mechanical
 Temp. Range: -40 °C ~ +105 °C
 Soldering: 250 °C 5Sec. Max.
 Torque: 0.4 N.m (3.54 Lb. in)
 Strip length: 6~7 mm

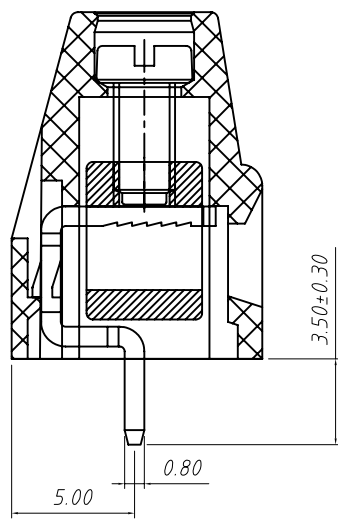
Order Information



GENERAL TOLERANCE		ANGLE TOLERANCE		PROJECTION	Description:	
.X	±0.60	.X	±5°	UNITS	Screw CONN TERM BLOCK 5.0MM	
.X	±0.38	.X	±3°	SHEET SIZE		A4
.XX	±0.25	.XX	±2°	KLS P/N:		KLS2-128-5.00-XXP-4S
Draw by: Date		2015-09-01		KLS ELECTRONIC CO., LTD.		
Check by: Date		2015-09-15				
SCALE		SHEET	OF			



PCB LAYOUT



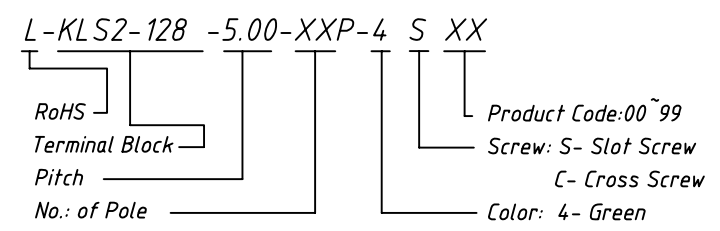
SECTION A-A

Material
 Screw: M2.5, Steel, Zn plated
 Cage: Iron, Nickel plated
 Pin header: Brass, Tin plated
 Housing: PA66, UL94V-0

Electrical
 Rated voltage: 300V
 Rated current: 16A
 Wire range: 22~12AWG 2.5mm²
 Contact Resistance: 20 mΩ
 Insulation resistance: 500MΩ/DC500V
 Withstand voltage: AC2000V / 1 min

Mechanical
 Temp. Range: -40 °C ~ +105 °C
 Soldering: 250 °C 5Sec. Max.
 Torque: 0.4 N.m (3.54 Lb. in)
 Strip length: 6~7 mm

Order Information



GENERAL TOLERANCE		ANGLE TOLERANCE		PROJECTION	Description:	
.X	±0.60	.X	±5°	UNITS	Screw CONN TERM BLOCK 5.0MM(IRON)	
.X	±0.38	.X	±3°	SHEET SIZE		A4
.XX	±0.25	.XX	±2°	KLS P/N:		KLS2-128-5.00-XXP-4S
Draw by: Date		2015-09-01		KLS ELECTRONIC CO., LTD.		
Check by: Date		2015-09-15				
SCALE		SHEET	OF			