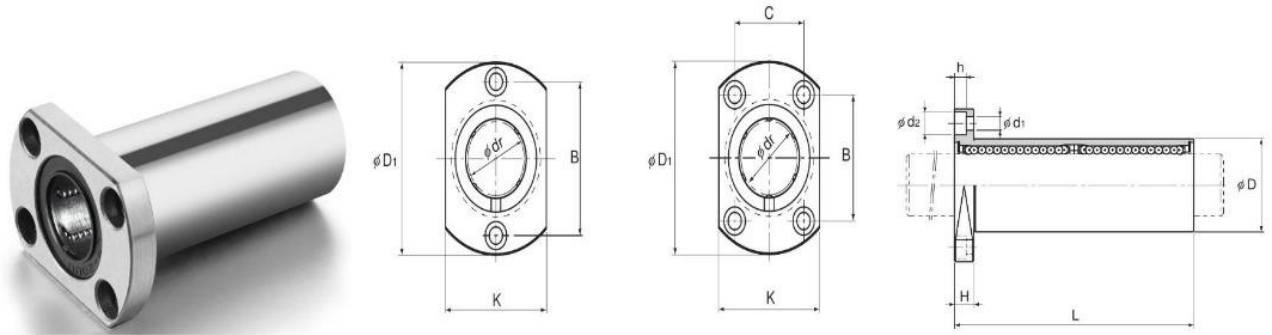


LMH-L LONG TYPE



Models LMH6L to 13L

Models LMH16L to 30L

Model No.	Ball rows	Main dimensions							
		Inscribed bore diameter		Outer diameter		Length		Flange diameter	
		dr	Tolerance	D	Tolerance	L	Tolerance	D ₁	Tolerance
LMH 6L	4	6	0 -0.010	12	0	35	0 -0.3	28	0 -0.2
LMH 8L	4	8		15	-0.013	45		32	
LMH 10L	4	10		19	0 -0.016	55		39	
LMH 12L	4	12		21		57		42	
LMH 13L	4	13		23		61		43	
LMH 16L	5	16	28	0 -0.019	70	48			
LMH 20L	5	20	32		80	54			
LMH 25L	6	25	40		112	62			
LMH 30L	6	30	45	123	74				

Unit: mm

Model No.	Main dimensions					Flange perpendicularity μm	Eccentricity (max) μm	Radial clearance tolerance μm	Basic load rating		Mass g		
	K	H	B	C	Mounting hole				C	C ₀			
					d ₁							d ₂	h
LMH 6L	18	5	20	—	3.4	6.5	3.3	15	15	-5	324	529	27
LMH 8L	21	5	24	—	3.4	6.5	3.3	15	15	-5	431	784	41
LMH 10L	25	6	29	—	4.5	8	4.4	15	15	-5	588	1100	72
LMH 12L	27	6	32	—	4.5	8	4.4	15	15	-5	657	1200	81
LMH 13L	29	6	33	—	4.5	8	4.4	15	15	-7	814	1570	105
LMH 16L	34	6	31	22	4.5	8	4.4	15	15	-7	1230	2350	182
LMH 20L	38	8	36	24	5.5	9.2	5.4	20	20	-9	1400	2750	217
LMH 25L	46	8	40	32	5.5	9.2	5.4	20	20	-9	1560	3140	477
LMH 30L	51	10	49	35	6.6	11	6.5	20	20	-9	2490	5490	575