

LPD-AB Special Price Series



Diameter Ø38mm Solid Shaft Ø 6mm AB Phases Type

■ Features

- Miniature size, easy assembling, low cost
- 2 quadrature output channel (A&B)
- Low cost and high performance
- Resolution 100, 200, 300, 360, 400, 600 PPR

■ Specification



| | | |
|-----------------------|----------------------|---|
| Brand | | GTEACH |
| Item | | Diameter 38mm shaft 6mm type incremental rotary encoder |
| Resolution(P/R) | | 100 200 300 360 400 600 |
| Output Phase | | AB Phase |
| Output Type | | NPN Open Collector, Voltage |
| Electrical | Supply Voltage | 5-24VDC |
| | Current consumption | Max. 40mA |
| | Response frequency | Max. 20Khz |
| | Allowable revolution | Max. 2000 rev/min |
| Mechanical | Starting torque | Max. 20gf.cm (0.002N.m) |
| | Rotor inertia | Max. 35g.cm ² (3.5*10 ⁻⁶ kg.m ²) |
| | Shaft loading | Radial: Max. 2kgf Thrust: Max. 1kgf |
| | Mechanical Speed | Max. 5000 rev/min (*1) |
| Environmental | Ambient temperature | -10~70℃ (at non-freezing status), Storage: -25~85℃ |
| | Ambient humidity | 35~85%RH, Storage: 35~90%RH |
| | Protection | IP52 (IEC standard) |
| | Vibration | 1.5mm amplitude at frequency of 10-55 Hz in each of X,Y, Z direction for 2 hours. |
| | Shock | Max. 50G |
| Unit weight | | Approx.: 160g |
| Cable | | 2.0m (The cable length can be customized) |
| Connection | | Cable outgoing type |
| Insulation resistance | | Min. 100MΩ (at 500VDC) |
| Approval | | CE ROHS |

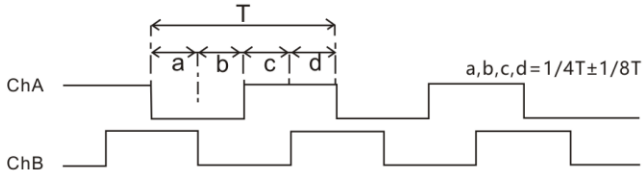
(*1) Mechanical speed > Allowable revolution, Please take allowable speed as standard when use

LPD-AB Special Price Series

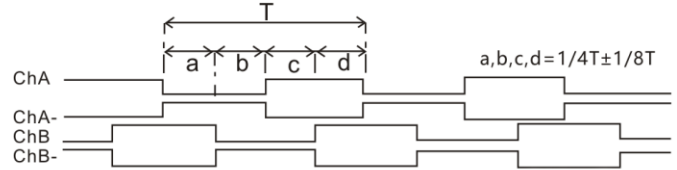
Ordering information

| LPD- | 3806- | 600BM- | G5-24 | C |
|--------|-------------------------------|-------------------------------|---------|----------------------|
| Series | Shaft | Resolution | VOLTAGE | Output type |
| LPD | 38: Diameter 06: 6mm shaft | 100,200, 300 360, 400, 600 | 5-24VDC | C: NPN E: Voltage |

Output Waveform



• Voltage type



• Line driver type (Not for LPD type)

Dimension

