



Feature -

- water proof IP67 sealed
- SPST, momentary function
- snap in panel mount installation
- bi-color LED illuminated available

Application -

- automotive industry
- office appliances
- communication equipments
- racing helmet

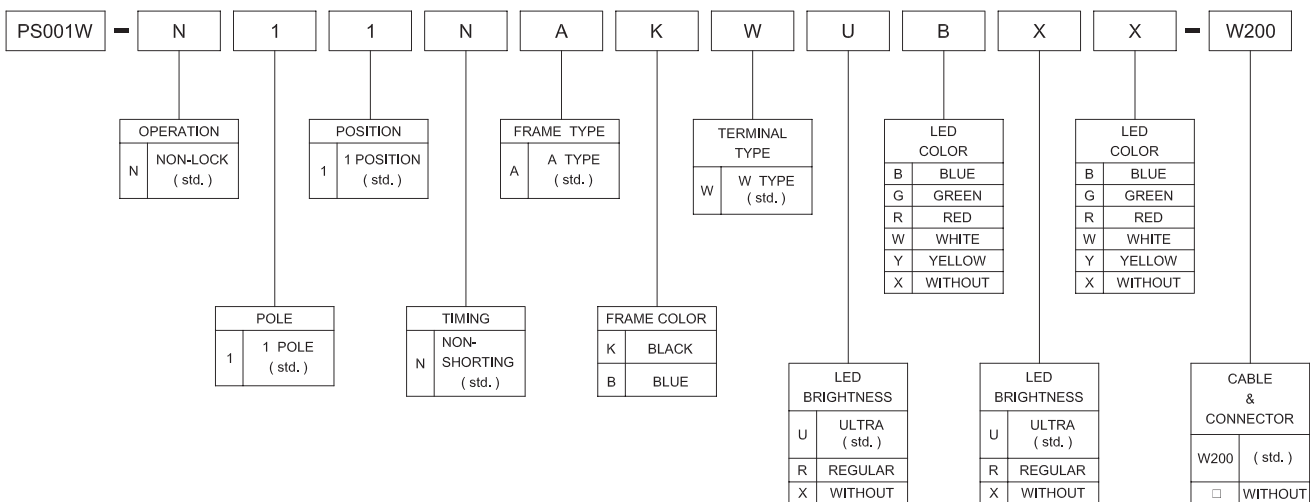
► SPECIFICATIONS

SWITCH SPECIFICATIONS	
POLE - POSITION	Momentary Type , SPST with LED
CONTACT RATING	30 V DC , 0.1 A
CONTACT RESISTANCE	50 mΩ MAX. 1.5 V DC ; 100 mA , by Method of Voltage DROP
INSULATION RESISTANCE	100 MΩ MIN. 500 V DC
DIELECTRIC STRENGTH	Breakdown is not Allowable ; 500 V AC for 1 Minute
OPERATING FORCE	400 ± 100 gf
OPERATING LIFE	50,000 cycles
OPERATING TEMPERATURE RANGE	-40°C ~ 85°C
TOTAL TRAVEL	1.0 ± 0.3 mm
SEALING	IP67

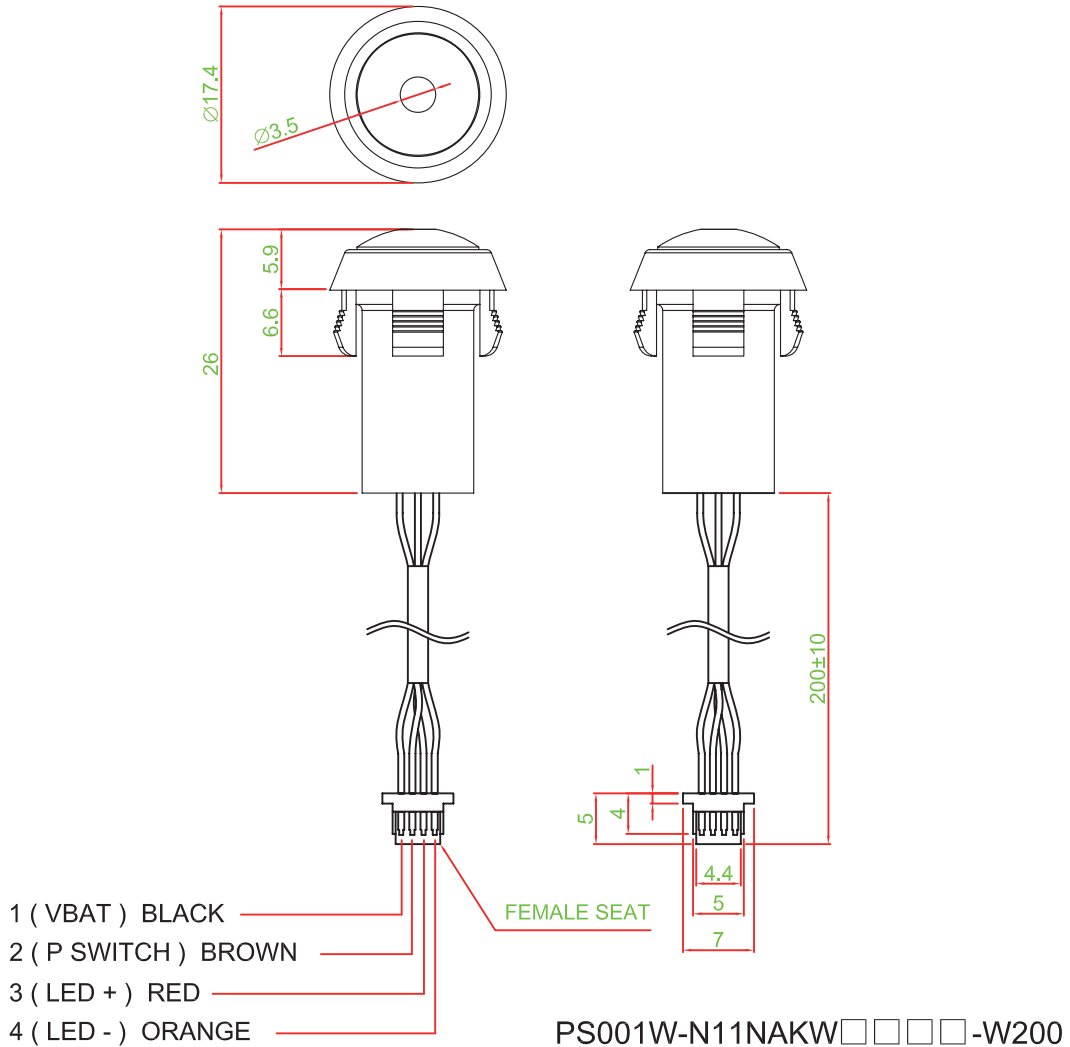
LED SPECIFICATIONS		Value / LED Color			
	Unit	Blue	Green	Red	Yellow
		FORWARD CURRENT	If	20	20
REVERSE VOLTAGE	Vr	5.0	5.0	5.0	5.0
REVERSE CURRENT	Ir	10	10	10	10
FORWARD VOLTAGE@20mA	Vf	3.3-4.0	2.1-2.5	2.0-2.5	2.0-2.5
LUMINOUS INTENSITY@20mA	Iv	1300	700	900	700

Physical and electrical information of LED will be provided upon customer's request on switches .

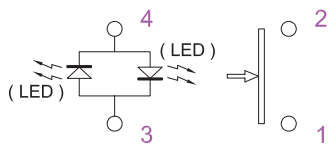
► HOW TO ORDER



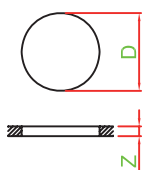
▶ DIMENSION



▶ LED CIRCUIT DIAGRAM



▶ PANEL CUT OUT



Z	D
1.0 ~ 2.0	15.2 ~ 15.4
2.0 ~ 2.5	15.4 ~ 15.8
2.5 ~ 3.0	15.8 ~ 16.0

▶ MATERIAL

- COVER : PA + GF
- ACTUATOR : PC
- BASE FRAME : PA + GF
- TERMINAL : BRASS GOLD FLASH

Mouser Electronics

Authorized Distributor

Click to View Pricing, Inventory, Delivery & Lifecycle Information:

Well Buying:

[PS001W-N11NAKWUBXX](#) [PS001W-N11NAKWUBXX-W200](#) [PS001W-N11NAKWUGXX](#) [PS001W-N11NAKWUGXX-W200](#) [PS001W-N11NAKWURXX](#) [PS001W-N11NAKWURXX-W200](#) [PS001W-N11NAKWUWXX](#) [PS001W-N11NAKWUWXX-W200](#) [PS001W-N11NAKWUYXX](#) [PS001W-N11NAKWUYXX-W200](#) [PS001W-N11NAKWXXXX](#) [PS001W-N11NAKWXXXX-W200](#)