

# AC DIN RAIL METER INSTRUCTION MANUAL

MODEL: PZEM-008

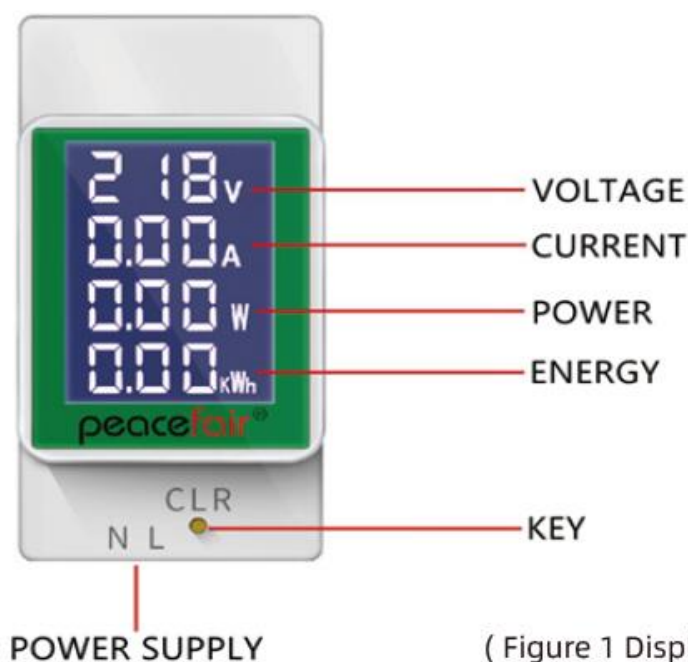
## A. Function

Measure AC voltage, current, active power, energy and display with LCD.

## B. Display

### I. Display interface

BTN wide viewing angle LCD: voltage + current + active power + energy + white backlight(see Figure 1)



( Figure 1 Display Diagram )

## II . Display Instruction

### 1.Voltage

Measurement range: AC50 ~ 300V      Starting test voltage: 50V  
Accuracy:  $\pm 1\%$

### 2.Current

Measurement range:0 ~ 100A      Display format:  
Starting test current:0.02A      < 10A display such as: 9.99A  
Accuracy:  $\pm 1\%$       < 100A display such as: 99.9A

### 3.Active Power

Measurement range:0 ~ 30kW  
Display format: < 10W display such as: 9.99W  
< 100W display such as: 99.9W  
< 1000W display such as: 999W  
< 10000W display such as: 9.99kW  
 $\geq 10000W$  display such as: 30.0kW  
Starting test power:0.5W  
Accuracy:  $\pm 1\%$

### 4.Energy

Measurement range:0 ~ 1999kWh  
Display format: < 10kWh display such as: 9.99kWh  
< 100kWh display such as: 99.9kWh  
< 1000kWh display such as: 999kWh  
< 10000kWh display such as: 1999kWh  
Over the test range will maintain the data, otherwise you reset it.  
Accuracy:  $\pm 1\%$

## C. Other Function

### 1.Backlight control

The backlight can be turned on or off by short press the key

### 2.Reset energy

Long press the key over 3 seconds until the energy data flash, then release the key, short press the key again to reset the energy, otherwise after 3 seconds it will stop flashing and the energy will not be reset. (See figure 1)

### 3.Data Storage

When the power off, the energy data and backlight status can be saved.

# E. Wiring Diagram

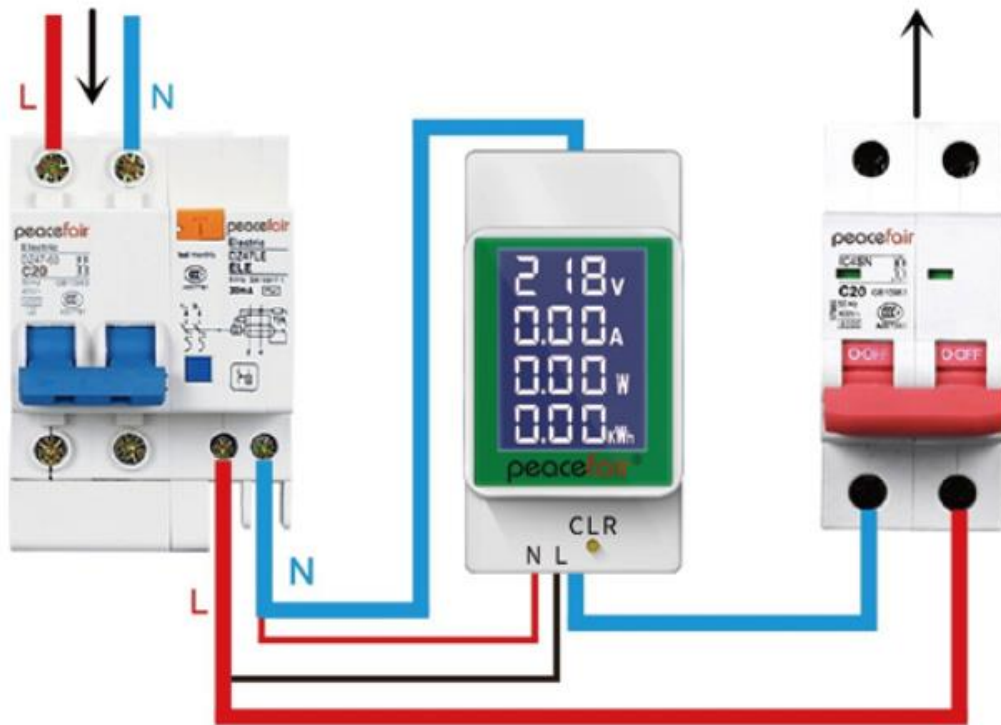


Figure 3 Wiring Diagram(Up in and down out / no need to distinguish N or L)

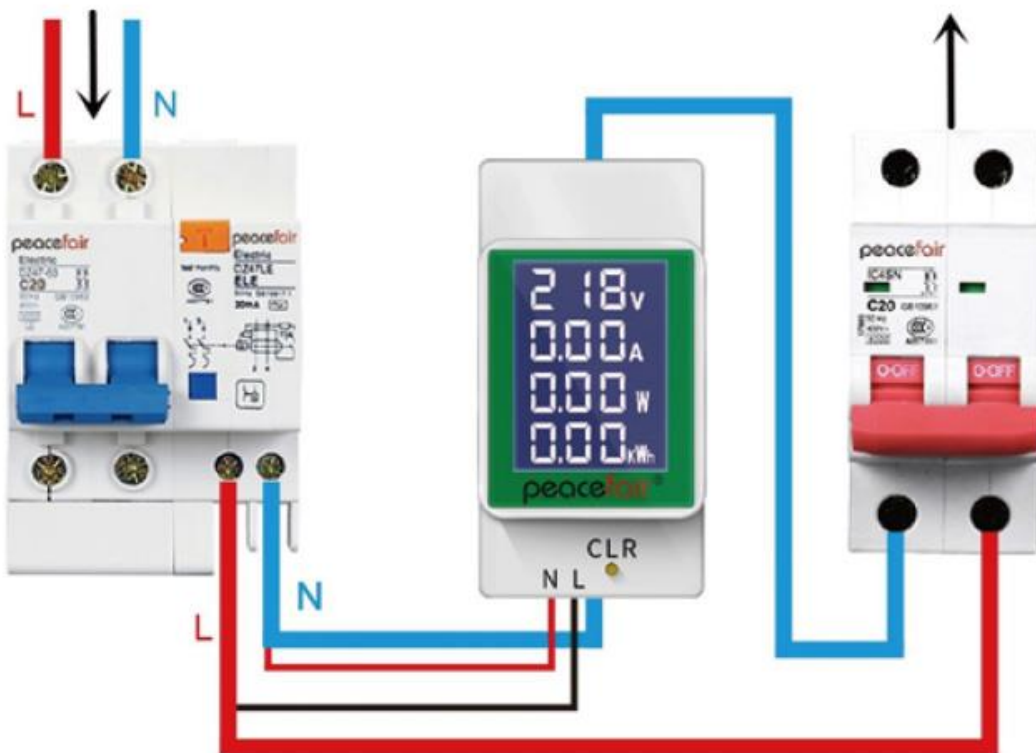


Figure 4 Wiring Diagram(down in and up out / no need to distinguish N or L)

<b>Function</b>	<b>Test Range</b>	<b>Display Format</b>	<b>Starting measurement</b>	<b>Accuracy</b>
<b>Current</b>	0-100A	< 10A display such as : 9.99A < 100A display such as : 99.9A	0.02A	±1%
<b>Voltage</b>	AC50~300V		50V	±1%
<b>Active Power</b>	0~30kW	< 10W display such as : 9.99W < 100W display such as : 99.9W < 1000W display such as : 999W < 10000W display such as : 9.99kW ≥10000W display such as : 30.0kW	0.5W	±1%
<b>Energy</b>	0~1999kWh	< 10kWh display such as : 9.99kWh < 100kWh display such as : 99.9kWh < 1000kWh display such as : 999kWh < 10000kWh display such as : 1999kWh Over the test range will maintain the data, otherwise you reset it.		±1%